

# Mangawhai Community Wastewater Scheme

## PAST

### 1999



- Individual on-site sewage treatment and disposal system. No sewer network was present.
- Poor harbour quality - contamination strongly related on-site sewage treatment and disposal systems
- Unsafe for swimming
- Unsafe for Kai

### 2010

Opening of the CWWTP

### 2010 to 2019

Harbour water quality improved

- Additional connections to the scheme supporting the town's rapid growth

## PRESENT

### 2020

- Clean harbour and tourist destination

Serving  
**2,000 connections**

Aeration system improved capacity of the plant to

**3,000 connections**

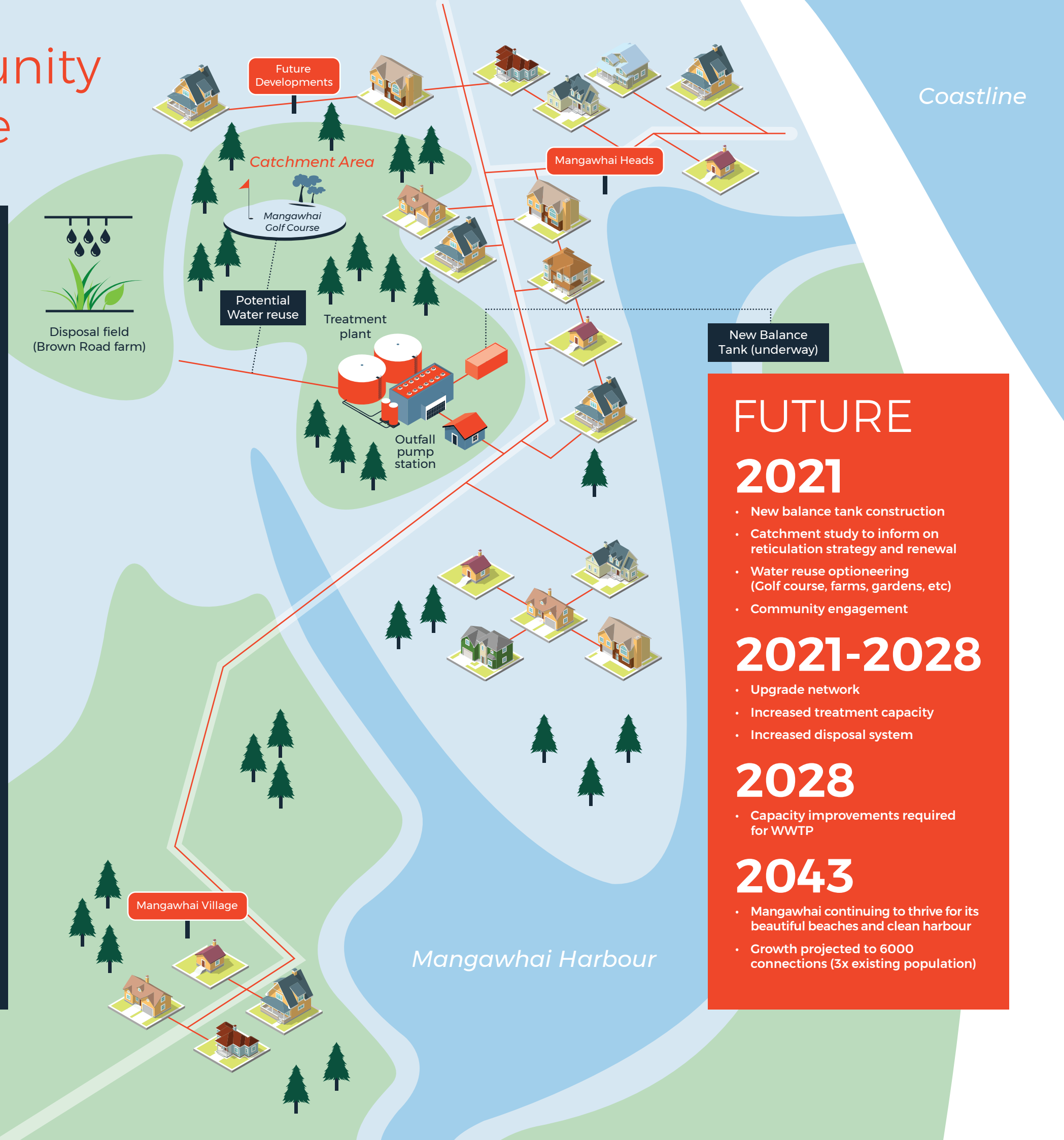


Irrigation of the fields extended to

**65 ha**

**Scheme long term strategy available**

- 'User pays' principle by way of targeted rates and development contributions



## FUTURE

### 2021

- New balance tank construction
- Catchment study to inform on reticulation strategy and renewal
- Water reuse optioneering (Golf course, farms, gardens, etc)
- Community engagement

### 2021-2028

- Upgrade network
- Increased treatment capacity
- Increased disposal system

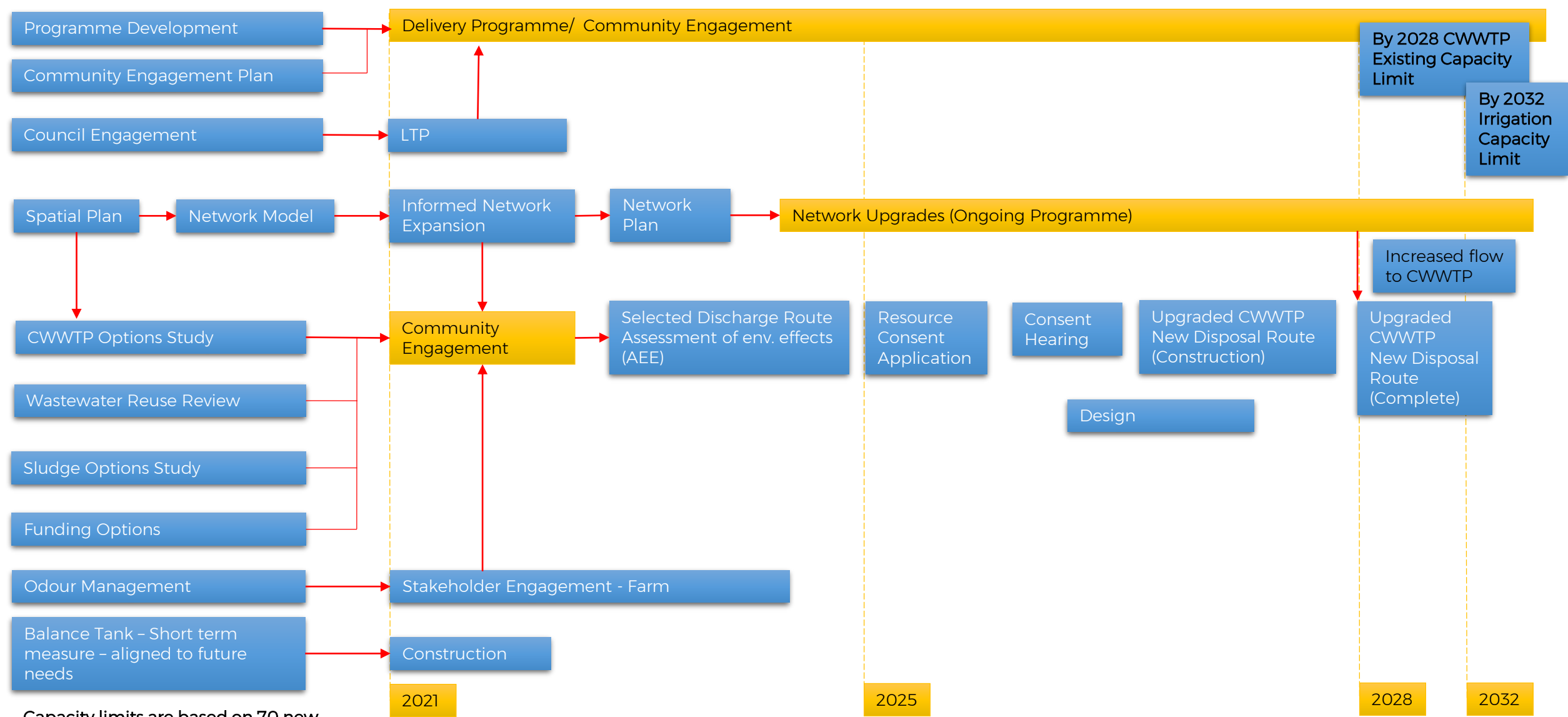
### 2028

- Capacity improvements required for WWTP

### 2043

- Mangawhai continuing to thrive for its beautiful beaches and clean harbour
- Growth projected to 6000 connections (3x existing population)

# Mangawhai CWWTP Roadmap



Capacity limits are based on 70 new connections per year