

Greetings from the Mayor

At the June Council meeting we adopted the Annual Plan for 2023-2024, unanimously agreeing to an average rates rise of 4.96 percent (excluding water charges).

As we updated the budgets and work programme for this coming year, there were many factors to carefully consider when making decisions. The number of external challenges placing pressure on our operating environment were apparent, with Council facing the same rising costs as our communities – spiralling inflation, interest rate hikes, an overall creeping cost of living. In spite of our best efforts, rising construction costs are having noticeable impacts on our business, as evidenced in the 12.4 percent increase we are facing with roading construction this year.

Against the background of these challenges, we saw a period of extreme weather events in February that caused long-term damage to our district's infrastructure. As a result, Council has prioritised emergency roading repairs in the work programme for this year. Too many of our roads are not fit for purpose and the fixes are needed urgently to get the district moving again. We also have to make sure we are prepared for future events by upgrading parts of the Mangawhai stormwater network, repairing the Dargaville town stopbank, and the Whakahara floodgate and stopbank, and other infrastructure that was damaged. And by focusing on these first and foremost, we can source much-needed external funding to ease any burden for our ratepayers.

Alongside this we have a number of key projects to be getting on with. Capital projects planned for this year include recladding the Northern Wairoa War Memorial Hall (Dargaville Town Hall), constructing the Dargaville shared path and cycle lanes, and continuing work on the Mangawhai shared path (Phase Three).

While it's been a testing start to the year, I am strengthened by the resilience shown by our communities. In my regular travels around the district, I have met with many of you. We are a tough lot and already back on our feet and getting on with it. I know that unexpected emergency works coupled with some ambitious capital works means delivering this year's work programme will be demanding, but I am confident that our Executive Team and staff can meet these challenges.

We're focused on maintaining our vibrant district and encouraging new people to our areas, stimulating growth and supporting the economic development of our communities. Kaipara has a bright future.



Craig Jepson
Kaipara District Mayor



How have my rates changed?

On average rates have gone up by **4.96%** for the 2023-2024 year. That means around half of people will experience a change of more than that and half will experience a change of less than that.

Your rates are made up of two components.

Targeted rates

These rates are paid by some people, depending on where you live or the specific services you receive. Targeted rates may be based on land value or they may be a fixed amount. Examples of targeted rates that are based on land value are land drainage areas, such as Raupō Drainage, or stormwater. These are listed on your rates invoice. When rates are fixed, everyone pays the same amount. An example is the Dargaville and surrounds CCTV rate, Mangawhai Harbour restoration rate and rates for wastewater services.

Wastewater

The wastewater charge has increased across the district due to full depreciation now being rated on all Kaipara

wastewater plants (last year, depreciation was funded at 90%). This depreciation is used to fund future renewals. In addition, investigations are also being funded for a concept design for a new wastewater system in Paparaoa and the infiltration of the Dargaville wastewater system.

As part of the Long Term Plan 2021-2031 process Council consulted with the community and agreed to equalise costs for wastewater services across the district, with a staggered entry for those on the Te Kopuru system over three years. This is the last year and so the increase this year is higher for these ratepayers.

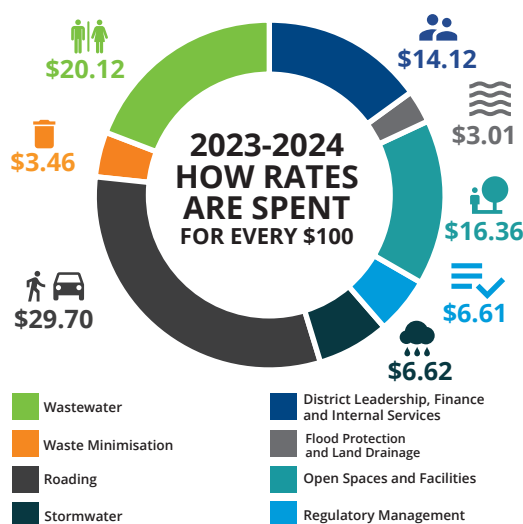
Stormwater (rated on land value per scheme)

There is a significant increase to the Mangawhai stormwater charge as this year provides for catchment management plans to be drafted. The effects of the February extreme weather events highlighted the lack of stormwater infrastructure in parts of Mangawhai, so this year there is focus on ensuring there is sufficient stormwater infrastructure for residents, both current and in the future.

General rates

These rates are shared throughout the district, depending on the value of your land. A fixed amount known as the Uniform Annual General Charge is also charged to all properties. This pays for general services such as road maintenance, district leadership and reserves and open spaces. This year, the Uniform Annual General Charge (UAGC) has been increased from \$764 to \$800. This has generally meant that lifestyle, pastoral and dairy properties pay less of the general rate than they would have if the UAGC remained at \$764.

For the third year of the Long Term Plan 2021-2031, this is our plan for spending general rates per \$100.



*Figures used are for the year ahead 2023-2024. Excludes water.

What affects the rates that I pay?

Council work programme

Many services we provide are paid for by rates. The volume of work, and the cost of it, affects the total amount the Council needs to collect. Most of the work we do is necessary to keep services, such as roads, water and wastewater systems, working. Generally, this work cannot be deferred. A small part of our budget, such as the grants we provide or the parks we manage, are important to help our communities thrive. When setting rates, Elected Members carefully balance the benefit of the service against the cost to ratepayers.

External funding

To minimise the cost to ratepayers, the Council looks for alternative funding sources, such as government grants, wherever it can. Projects such as the Dargaville shared path and cycleways, and the Mangawhai shared path are supported by government. The emergency works we are carrying out this year due to the February extreme weather events will be supported by a 82% Waka Kotahi NZ Transport Agency subsidy, 20% above Council's normal subsidy rate for roading.

Rates Update - July 2023

Property value

Some rates are based on the value of your land, when compared with other land values in the district. If you think of the Council's rates as a pie, your slice of the pie will be larger than your neighbours if your property is valued higher.

Northland Regional Council rates

Your invoice includes rates for Northland Regional Council (NRC). These are collected by KDC on behalf of NRC.

How to pay your rates

The easiest way to make regular rates payments is by direct debit. You can make your payments weekly, fortnightly, monthly, quarterly or annually. We can help you set the direct debit up and do all the administration for you. You won't have to remember to pay your bill and there's no need for you to contact the bank or adjust your payments when rates change. We'll give you plenty of notice and adjust your payments annually.

You can also pay using:

- ➔ Bill payment
- 📱 Credit card online or
- 👤 Eftpos at our office.

We cannot accept cheques as our bank will no longer process them.

You'll find more information at kaipara.govt.nz/rates You can contact our friendly team by phone 0800 727 059 or email revenue@kaipara.govt.nz if you need a hand.

Rates rebates

The Rates Rebates Scheme provides a rebate for low-income earners who were paying rates for the home they live in.

The new maximum rebate and income abatement thresholds for 2023/2024 are:

- Maximum rebate \$750 (was \$700)
- Income abatement threshold \$30,100 (was \$28,080)

Find out more

- 🔍 Online at govt.nz, search 'rates rebate'
- 👤 By visiting Council offices in Mangawhai or Dargaville
- 📞 By phoning 0800 727 059