

NORTHLAND TRANSPORTATION ALLIANCE



Kaipara te Orangahau • Two Oceans Two Harbours



Kānoa
Regional Economic Development
& Investment Unit

The Kaihu Valley Trail (KVT) Update 7

Dec 2021

The Kaihu Valley Trail is a 40km walking and biking track being constructed from Dargaville to Donnellys Crossing. It will form part of the [Ancient Kauri Trail](#) that extends from Omapere to Maungaturoto and be part of the [22 Great Rides](#) around New Zealand. *Prepare to be awed by a valley of dramatic contrasts, through farmland and forest, along an enchanting river, capturing historical and cultural stories along the way - become part of the untamed West Coast of Kaipara.*

Progress on Consent

COVID-19 has impacted on the flow of engagement and work in progress for KVT. We were hoping to have the earthworks consent and the unveiling of the KVT sign on Station Road in Dargaville by 01 October 2021. The “rose coloured glasses” had to be removed.

We are waiting for the earthworks consent to be approved and hope to get that before we break for Christmas. If so, we expect to start construction late January 2022 to finish in Nov/Dec 2022.

DOC Concession - updated status

Along with the KDC earthworks consent for the full trail we also need an Easement Concession from our partners DOC, which applies to the top third of the trail from Kaihu Township to Donnellys Crossing. This concession has been delayed and in order to start work on the trail as soon as we can, the Project Team has made a decision to split the earthworks consent into two parts, the corridor owned by KDC and the corridor owned by DOC.

This means once we get the consent for the KDC section we can start on the trail that runs from Station Road in Dargaville to Parore West Road. This section may well be opened to the public to use, as we move onto the other sections.

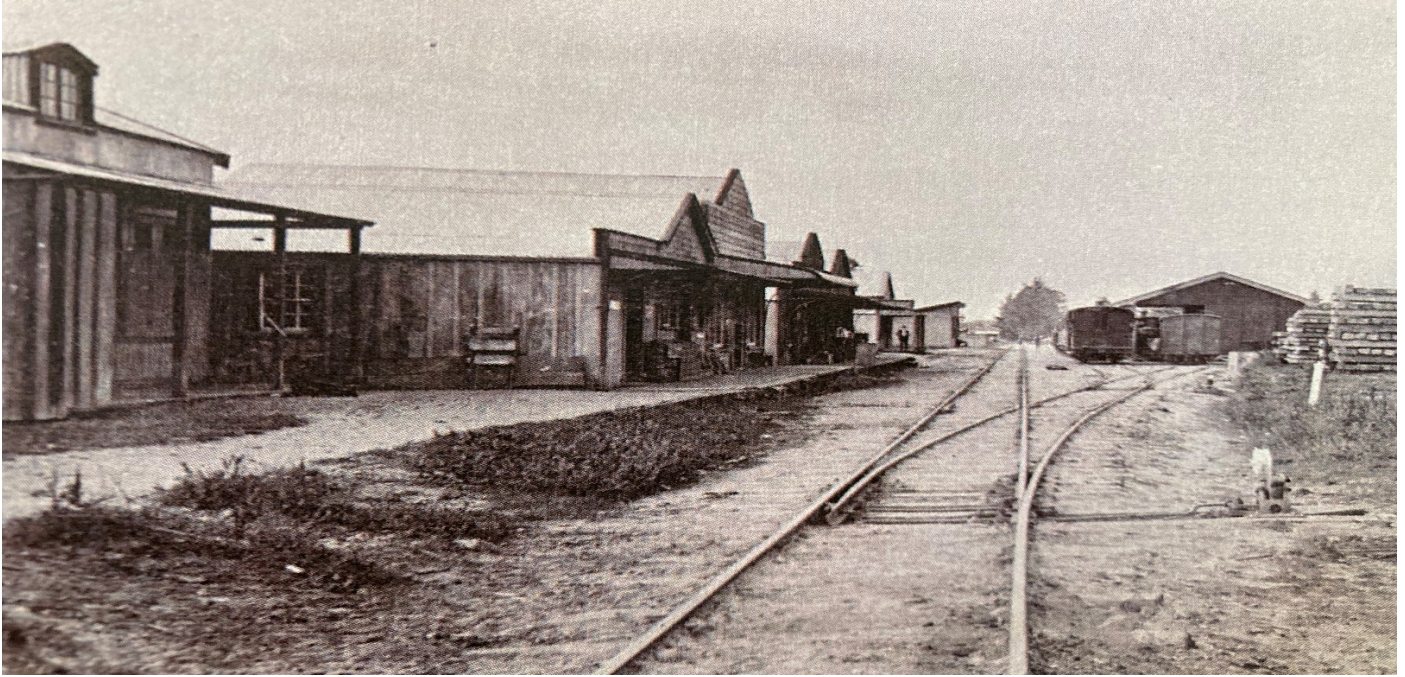
Survey completed on river bank in Mamaranui area

As you know there are a few places along the trail where we have come across challenges and one of those areas is the Mamaranui section. The state highway crossings are some of those challenges. We have had conversations with landowners on both sides of the river to try to avoid the state highway and land concerns in the valley. You may have seen surveyors and a drone along this section recently as a stream bank survey is required to provide more information about the riverbank.

Spotlight on: Kaihu Station

Kaihu Station (originally the second station to be named Opunake Station) and Donnellys Crossing were the most significant rural stations. There were a number of railways and other buildings aligned with the track. The photograph below shows the station in 1912, looking south towards the Bastich family home (where a man is standing), which also housed a pool room and a boarding house. It was later a general store until the depression in the 1930's. Both Kaihu and Opunake Station sites are protected archaeology sites under the Heritage New Zealand Pouhere Taonga Act as they were the original termini of the railway in 1888 and 1893.

(text and photo taken from the Archaeology Report created for Kaipara District Council July 2021)



Holiday Message from The KVT Project Team

This time next year you may be inviting family and friends to come home and ride the Kaihu Valley Trail over the holidays!

We hope you get the chance to enjoy the festive season and the 2021 summer holidays and we look forward to communicating with you all in 2022.

If you have questions about the KVT you can contact our Community Engagement Advisor, Amanda Bennett at kaihutrail@kaipara.govt.nz or call 09 439 1206. kaipara.govt.nz/kvt

