



IN THE MATTER

of the Resource Management Act
1991

AND

IN THE MATTER

of appeals under clause 14 of the
First Schedule to the Act

BETWEEN

**FEDERATED FARMERS OF
NEW ZEALAND
(INCORPORATED)
ENV-2011-AKL-000221**

AND

**THE DIRECTOR-GENERAL OF
CONSERVATION
ENV-2011-AKL-000231**

AND

**ROYAL FOREST AND BIRD
PROTECTION SOCIETY
INCORPORATED
ENV-2011-AKL-000245**

AND

**MERIDIAN ENERGY LIMITED
ENV-2011-AKL-000250**

Appellants

AND

KAIPARA DISTRICT COUNCIL

Respondent

BEFORE THE ENVIRONMENT COURT

Acting Principal Environment Judge L J Newhook sitting alone under section 279 of the Act
IN CHAMBERS at Auckland

CONSENT ORDER



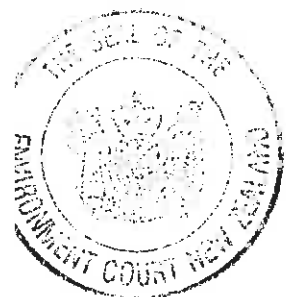
Introduction

1. These appeals relate to the Proposed Kaipara District Plan. This consent order resolves the relief sought in these appeals as it relates to topic ENV-2012-349-000002 natural environments.
2. In making this consent order the Court has read and considered the appeals and the memorandum of the parties dated 10 July 2013.
3. The Director-General of Conservation, Horticulture New Zealand, Meridian Energy Limited, Northpower Limited, and Federated Farmers of New Zealand (Incorporated) have given notice of an intention to become parties to the appeals under section 274 and have signed the memorandum setting out the relief sought.
4. The Court is making this order under section 279(1)(b) of the Act, such order being by consent, rather than representing a decision or determination on the merits pursuant to section 297. The Court understands for present purposes that:
 - (a) All parties with an interest in these proceedings have executed the memorandum requesting this order.
 - (b) All parties with an interest in these proceedings are satisfied that all matters proposed for the Court's endorsement fall within the Court's jurisdiction, and conform to relevant requirements and objectives of the Resource Management Act, including in particular Part 2.

Order

5. Therefore the Court orders, by consent, that the appeals are allowed to the extent that the Kaipara District Council is directed to amend the following sections of the Proposed Kaipara District Plan as shown in Annexure A to this Order:

- Chapter 6 Ecological Areas;
- Chapter 20 Reserve Management Units;
- Chapter 24 Definitions;
- Appendix 25G Assessment of Ecological Significance; and
- Map Series 2.



6. This consent order resolves the appeals by Federated Farmers of New Zealand (Incorporated), the Director-General of Conservation, Royal Forest and Bird Protection Society Incorporated, and Meridian Energy Limited on this topic (ENV-2012-349-000002).

7. There is no order as to costs in relation to this consent order.

DATED at Auckland this

25th

day of

July

2013



L J Newhook
Acting Principal Environment Judge



ANNEXURE A



6 Ecological Areas

6.1 Introduction

The Kaipara District contains significant areas of indigenous forest, shrubland, wetlands, dune lakes and dune lands which have very important ecological values. These areas are home to a unique range of plants and animals. The District also contains the Kaipara Harbour which is the largest harbour in New Zealand and the Southern Hemisphere and provides a nationally and internationally important habitat for migratory and non-migratory bird species.

The forests and shrublands are notable for their diversity of native species. The forests contain a mixture of podocarp and hardwood species including kauri, miro, puriri, rata, rewareware, rimu, tararua, taua, tohara and tawhi. Most of these ecological areas have previously been modified or cleared and are, at least in part, of a regenerating nature. However, there are several unmodified kauri forests, the most notable being the Waipoua Forest, which is the largest in New Zealand (and borders the Kaipara and Far North Districts). The forests and shrublands are home to variety of plants and animals, including nationally threatened and regionally rare species such as the North Island kokako, North Island brown kiwi, the kauri snail, the Hochstetter's frog, the Pihosporum kirkii tree and the Hebe speciosa shrub.

The Kai Iwi dune lakes include one of the two deepest dune lakes in New Zealand and second largest lake in Northland as well as a range of threatened species including the nationally threatened aquatic plant Trithuria inconspicua and the fish the Dune Lake Galaxias.

The West Coast consolidated habitat is made up of coastal cliffs and hill slopes of tussock, flaxland, vineyard and shrubland associations dominated by areas of coastal toetoe, barakeke, pohuehue, mingimimi and manuka. The Poua dune system embraces one of the most extensive and least modified dune land, wetland and dune lakes complexes in the country. It supports an impressive range of threatened plant and animal species including the Northland stronghold for the wetland plant, marsh fern and a nationally significant population of the northern New Zealand dotterel.

Most of the major ecological areas are in Crown ownership and held for conservation purposes. The Crown estate which is managed by the Department of Conservation stands at around 20,000 hectares. This represents about 8% of the total land area in the District. It comprises several large blocks such as the internationally renowned Waipoua Forest as well as numerous small areas such as Sterling's Bush, near Papanoa. The largest conservation blocks within the Kaipara District which are managed by the Department of Conservation are:

- Kaihu Forest (Pt of Northland Conservation Park) Area – 2,424 hectares (of a total conservation area of 4,320 hectares);
- Houo Forest (Pt of Northland Conservation Park) Area - 988 hectares;
- Marene Forest Conservation Area - 1,356 hectares (of a total conservation area of 2,640 hectares);
- Maniborough Conservation Area - 4,795 hectares (of a total conservation area of 5,360 hectares);
- Matareua Forest (Pt of Northland Conservation Park) - 5,703 hectares (of a total conservation area of 8,000 hectares);
- Poua Conservation Area – 3,567 hectares;
- Poua North Conservation Area – 1,398 hectares;
- Tangihua Forest (Pt of Northland Conservation Park) - 3,240 hectares (of a total conservation area of 3,900 hectares);
- Tounson Kauri Park Scenic Reserve - 586 hectares;
- Waipoua Forest (Pt of Northland Conservation Park) – 12,410 hectares; and
- Waipou Gorge Forest Conservation Area - 154 hectares.

Estates managed by the Department of Conservation are administered in accordance with their status as conservation areas, protected areas or reserves under the Conservation Act 1967 and Reserves Act 1977 respectively. The District Council also administers several small areas of forest which have been set aside as reserves. The principal areas concerned are:

- Hamlyn's Bush Scenic Reserve;
- Maropiu Bush Scenic Reserve;
- Maungaraho Rock Scenic Reserve; and
- Turiwiri Bush Scenic Reserve.

In addition to the above, there are significant areas of conservation value, including native forest and shrub land that are in private ownership. Private owners are primarily responsible for the management of

The Plan seeks to protect areas of ecological significance

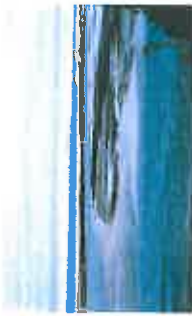
There are forests, shrub lands and wetlands of ecological value in the District

Many ecological areas of the District are already protected (e.g. they are in reserves)

this land, although Northland Regional Council has a responsibility for weed, pest and erosion control. An important goal for Council and the community is to achieve widespread commitment to the active protection of areas of significant indigenous vegetation and significant habitats of indigenous fauna on both public and private property for current and future generations.

The Department of Conservation has a system in place to ensure information on natural features in the District and assessing other features under its Protected Natural Areas Survey Programme (is regularly being updated. As the District contains eight of the Departments' ecological districts', being Oiamatea, Kaipara, Tutamoe, Tangihua, Waipou, Whangarei, Tokatoka and Rodney.

Council has produced maps which identify the distribution and abundance of kiwi in the Kaipara District based on information from New Zealand Land Care Trust Land. These maps are included within Part E – Maps as Appendix F. Council recognises high-density kiwi habitat as significant habitat in terms of the relevant provisions of the District Plan. Council has a range of measures aimed at protecting or enhancing kiwi habitat including advocacy and education, conditions on consents in areas of confirmed high-density kiwi habitat, and use of other procedures such as the Council Bylaw on Dog Control.



Wairau River, Maungaturoto



Mangawhai Harbour

6.2 Resource Management Act Requirements

In Part 2, the Resource Management Act 1991 requires that areas of significant indigenous vegetation and significant habitats of indigenous fauna are protected. Areas identified in Department of Conservation's Protected Natural Areas Survey programme as being internationally or nationally important will have the highest priority when allocating resources to assist with their protection.

In evaluating the 'significance' of other areas, Northland Regional Policy Statement provides guidance to Council and the criteria set out in Appendix III of that Statement will be applied.

Criteria for identifying areas of significant vegetation and significant habitats of indigenous fauna are listed in Section 6.7.1

The Rules to implement this Chapter are in the Zone Chapters, Part B

6.3 How to Use This Chapter of the District Plan

This Chapter contains issues, Objectives and Policies relating specifically to recognising and protecting Ecological Values. While this Chapter does contain methods, it does not contain 'Rules'. The Outcomes sought for Ecological Areas (how the objectives and policies are implemented) are achieved through land use and subdivision Rules and performance standards in the Zone Chapters.

As long as a proposed activity meets the performance standards of the relevant Zone Chapter, landowners have flexibility on what they do on their property and do not need to consider this Chapter. However, if a proposed development, new land use or subdivision does require consent under the relevant Zone Chapter (Part B), you may need to give consideration to this Chapter, particularly on how your development contributes to achieving the objectives and policies for Ecological Values.

Before you use this Chapter of the Plan, check:

- ☑ That the proposed activity meets the performance standards for the relevant Zone (if it does you don't need to refer to this Chapter).
- ☑ If you do require a Resource Consent, review the assessment criteria to confirm if they include consideration of impacts on ecological values (if they don't and your activity is a 'Restricted Discretionary Activity, you don't need to refer to this Chapter).

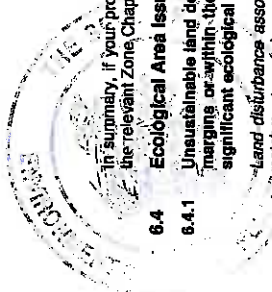
If you do need to consider this Chapter, consider how your proposal contributes to achieving the Objectives and Policies of this Chapter as well as those of other Chapters. Issues, Objectives and Policies within each Chapter of the Plan are presented in no particular order of importance.

Also, it is important to remember you may want to use this Chapter if you are proposing to seek one of the following types of subdivision as it will assist you in determining whether areas on your land have ecological value for an 'environmental benefit':

- 'Preservation of natural or cultural heritage';
- 'Environmental benefit'; or
- 'Integrated development'.

If you volunteer to protect an Ecological Area the Council may give you additional

Figure 1-2 in Chapter 1 provides a summary of how to use this District Plan



development rights
e.g. for subdivision

- 6.5 **Ecological Area Objectives**
In addition to the District Wide Objectives, the following Objectives apply:
To maintain and enhance the life supporting capacity of ecosystems, and the extent and representativeness of the District's indigenous biological diversity.
Issues 6.4.1, 6.4.2, 6.4.3, 6.4.4 and 6.4.6
- 6.5.1 To provide for the protection of, and promote the active management of, areas of significant indigenous vegetation and significant habitats of indigenous fauna.
To maintain ecological values through the protection of areas of significant indigenous vegetation and significant habitats of indigenous fauna while allowing appropriate subdivision, use and development.
Issues 6.4.2, 6.4.5 and 6.4.6
- 6.5.2 To promote active management of areas of significant indigenous vegetation and significant habitats of indigenous fauna.
Issues 6.4.2, 6.4.5 and 6.4.6

- 6.5.3 To protect the natural character of the coast, rivers and lakes and their margins within the District by avoiding, remedying or mitigating the adverse effects of surface water activities.
Issue 6.4.6
- 6.6 **Ecological Area Policies**
In addition to the District Wide Policies, the following Objectives apply:
By progressively improving the level and accuracy of information on Significant Ecological Areas, so that it can be effectively used for information, education, non-regulatory and regulatory methods and monitoring.
The Council will work with other agencies and landowners to identify those areas in the District of significance which warrant monitoring, investigation and protection. The Council will also work with other agencies to monitor the status of identified areas and in particular the success of policies adopted through the District Plan.
- 6.6.1 By managing the scale, intensity, and location of subdivision and land development activities in a way that avoids, remedies or mitigates adverse effects on areas of significant indigenous vegetation or significant habitats of indigenous fauna.
All subdivisions and land development activities will be assessed to determine whether they may result in adverse effects on significant ecological areas. Conditions may be imposed to avoid, remedy or mitigate effects or applications deemed where the effects cannot be avoided. The Council will seek alternatives to the disturbance of habitats where practicable:
 - Minimise any edge effects;
 - Avoid the removal of specimen trees;
 - Does not result in ecological linkages with other areas being lost
 - Avoids adverse effects on threatened species;
 - Minimises disturbance of root systems of remaining vegetation;
 - Does not result in the intentional or unintentional release of weeds or pest animals or the abandonment of domestic pets;
 - Encourages and where appropriate requires active pest control and the provision of pest-proof fencing to avoid the grazing of such areas; and
 - Encourages the use of eco-covered material for planting and restoration. Eco-covering is preferred practice when planting indigenous plants and in particular, when undertaking revegetation or restorative planting. It serves to maintain genetic diversity and increase plant survival because plants are accustomed to their local environment
- 6.6.2 Where disturbance of significant indigenous vegetation and significant habitats of indigenous fauna cannot be avoided, it should be undertaken in a way that minimises and/or mitigates adverse effects as far as practicable by:
 - * Ensuring that any disturbance:
 - a) minimises any edge effects;
 - b) avoids the removal of specimen trees;
 - c) does not result in linkages with other areas being lost
 - d) avoids adverse effects on threatened species;
 - e) minimises disturbance of root systems of remaining vegetation;

- 6.4 **Ecological Area Issues**
- 6.4.1 Unsustainable land development or land use activities adjacent to or on lakes, rivers and coastal margins or within the catchments of these environments can result in loss or degradation of significant ecological areas.

Land disturbance associated with subdivision, including earthworks and vegetation clearance in water catchment receiving areas and close to water bodies can adversely affect the stability of their margins, water quality and ecosystem viability. Activities on, or adjoining lakes and other sensitive receiving environments can have adverse effects on the character of these areas.

Human activities including uncontrolled stock grazing and inappropriate vehicle use have the potential to adversely affect natural areas and biodiversity of the District. Contamination and changes to flow regimes can result from runoff from the surface of roads, storage areas, disposal of stormwater and from industrial processes.

Weed invasion and inadequate control of animal and plant pests is also a significant factor in the degradation of the remaining significant ecological areas in the District.

There is little certainty of protection for the many significant ecological areas in the District, as in most cases, protection and active management is at the sole responsibility of the landowner. The lack of physical protection around the remaining areas (e.g. stock proof fencing) also means that some land use activities, such as uncontrolled grazing are a threat or potential threat to habitat values.

Ecological areas have become fragmented with a resulting loss of the natural corridors, which facilitate migration of fauna between areas.

Land use and development can result in the loss and degradation of ecosystems and habitats, and the fragmentation and isolation of habitats, resulting in a reduction in the abundance of certain species and a reduction in the natural values of an area.

The removal of parts of ecological areas may not seem significant on its own but if this results in loss of a natural corridor, potentially the whole ecosystem becomes less viable. In many instances animal species will not move between native ecosystems unless there is a vegetation connection (often native plant species) between two areas.

Past subdivision and land use practices have compromised the biodiversity of indigenous species and ecosystems within the District, and there remains a potential threat to those that remain.

Council has the responsibility (under the Resource Management Act 1991) to take into account the effects of subdivision and land use activities on the indigenous species in the District, their genetic diversity and the natural habitats and ecosystems that support them. Of the remaining areas of remnant native forest and wetlands outside of the Department of Conservation Estate, the majority do not have any legal or physical protection.

A notable proportion of the significant ecological areas are on private land. Their protection needs to be balanced with the ability of the landowners to provide for their social and economic wellbeing.

A proportion of the as yet unprotected significant indigenous vegetation and significant habitats of indigenous fauna is privately owned. The desire to protect these areas gives rise to questions of equity if protection of these areas unreasonably constrains otherwise normal rural activities and/or affects economic wellbeing.

There are several available databases of the District's significant ecological areas to assist the Council with the development of District Plan methods and monitoring. Some of these are out-of-date and incomplete (e.g. they do not consider ecological areas across the whole District).

There are some databases available on indigenous vegetation and fauna within the Kaipara District but these may not be up-to-date or the re-surveying of these areas may not be complete or up-to-date. The validity of these databases could currently be questioned in relation to: the continued existence of sites; their significance and quality; current threats; and the current level of voluntary protection being provided by landowners. Updating these databases, including electronic mapping and consultation with landowners requires significant resources.

The areas of indigenous vegetation and habitats within the District contribute to the unique character of the District, in particular coastal, harbour and lake areas, and they need to be retained and where possible enhanced.

Natural features, landscapes, indigenous vegetation and habitats of indigenous fauna are an integral component of the District's character. Preservation of the natural character of the coastal environment and the protection of areas of significant indigenous vegetation and habitats are matters of national importance.

it does not result in the introduction of exotic weed species or pest animals, and does not result in the intentional or unintentional release of weeds or pest animals of the abandonment of domestic cattle.

- Encouraged and where appropriate requiring the exclusion of domestic cats and dogs (except for working dogs as defined in the Dog Control Act 1996) in areas of high kiwi density (Appendix F to the Maps);
- Encouraging planting and restoration. Eco-sourcing is preferred practice when planting indigenous plants and in particular when undertaking revegetation or restorative planting. It serves to maintain genetic diversity and increase plant survival because plants are accustomed to their local environment.

Subdivisions and land development activities requiring consent will be assessed to determine whether they may result in adverse effects on significant ecological areas. Policy 6.6.2b provides a framework by which to assess those activities which might otherwise be appropriate but are proposing to disturb areas of significant indigenous vegetation or significant habitats for indigenous fauna. This Policy gives guidance on ways to minimise, remedy and mitigate adverse effects. Conditions may be imposed to avoid, remedy or mitigate effects. Notwithstanding the Policy 6.6.2b, applications may be declined where the effects cannot be appropriately managed.

6.6.3 By managing earthworks and vegetation clearance in all areas of the District in order to avoid, remedy or mitigate adverse effects on significant ecological areas, recognising that complete information on the exact geographic location of all these valued areas may not be available.

In the absence of a comprehensive schedule and maps identifying the location of significant ecological areas for the whole District, the Council will manage the level of land disturbance activities across the District. These activities will be assessed on a case-by-case basis in order to determine whether the areas concerned are significant, and whether the activity will result in adverse ecological effects. Recognition is given to the value placed on the environments of the District (e.g. the harbour, waterways, coast and lakes) through the environmental overlays.

6.6.4 By evaluating the significance of areas of indigenous vegetation and habitats of indigenous fauna by reference to the criteria listed in Appendix III of the Northland Regional Policy Statement

The Northland Regional Policy Statement contains an appendix which the Northland Regional Council uses to define criteria for identifying areas of significant vegetation and significant habitats of indigenous fauna. These criteria are listed in 6.7.1 (District Plan Methods) and in Appendix 25G.

6.6.5 By providing incentives in the Plan which encourage voluntary measures to protection and enhance of indigenous vegetation and habitats of indigenous species.

Provisions in this Chapter of the District Plan are initially voluntary and directed towards encouraging landowners to protect and actively manage significant ecological areas, through providing a range of tangible incentives, such as financial assistance (biodiversity fund) and subdivision opportunities. These incentives apply to measures in excess of those that would be required to avoid, remedy or mitigate the effects of land use, subdivision or development.

6.7 Methods
The above Policies will be implemented through the following Methods:

- 6.7.1 District Plan Methods
- 6.7.1.1 Administer Rules within Zone Chapters controlling activities which may adversely affect the ecological values of features of International, national, regional, or district significance.
- 6.7.1.2 In all Zones Rules apply to the clearance of indigenous vegetation, recognising the environmental values of those areas within Identified Overlays.
- 6.7.1.3 Policies in the District Plan supporting initiatives for weed and pest control and habitat management to be implemented, where practicable, when assessing applications for subdivision and Land Use Consents and by financial assistance.
- 6.7.1.4 Incentives in the District Plan Rules encourage voluntary protection of indigenous vegetation and habitats of indigenous species.

6.7.1.5 Council retains the discretion to impose conditions regarding the keeping of dogs and cats on subdivision or Land Use Consents within areas of confirmed high density kiwi habitat and ecological areas. For example, for areas identified in Part E (Maps) Appendix F: Kiwi Density and

other relevant databases including the Department of Conservation's Protected Natural Areas Survey Programme areas, the NIWA Freshwater Fish Database and Threatened Land Environments of New Zealand database.

6.7.1.6 Appendix F to the Maps contains indicative maps showing the areas of kiwi habitation in Kaipara District. Policy 6.6.1

6.7.1.7 The significance of indigenous vegetation and habitats will be assessed by reference to the criteria in Appendix III of the Northland Regional Policy Statement, and also contained within Appendix 25G, Part D of this Plan, when processing applications for Resource Consent for land use or subdivision. These criteria are:

- a) Whether the area contains critical, endangered, vulnerable or rare taxa, or taxa of indeterminate threatened status (in the context of this clause, taxa means species and subspecies);
- b) Whether the area contains indigenous or endemic taxa that are threatened or rare in Northland;
- c) Whether the area contains representative examples in an ecological district of a particular habitat type;
- d) Whether the area has a high diversity of taxa or habitat types for the ecological district;
- e) Whether the area forms an ecological buffer, linkage or corridor to other areas of significant vegetation or significant habitats of indigenous fauna;
- f) Whether the area contains habitat types that are rare in the ecological district;
- g) Whether the area supports good populations of taxa which are endemic to the Northland or Northland-Auckland regions;
- h) Whether the area is important for indigenous or endemic migratory taxa; and
- i) Whether the area supports viable populations of species, which are typical of that type of habitat within an ecological district and retain a high degree of naturalness.

6.7.2 Other Methods

6.7.2.1 The Council will make available on its website a direct link to the Department of Conservation's published Protected Natural Areas Reports and also make these available through Council offices:

6.7.2.2 6.7.2.3 The Council will progressively develop a database on significant indigenous vegetation and significant habitats of indigenous fauna, including confirmed high density kiwi habitat. The database will contain information on the type, location, level of significance, vulnerability, condition and protection status of indigenous vegetation and habitats of indigenous fauna in the District. Sources for the database will include, but not be restricted to:

- a) Sites under statutory protection outside of the Resource Management Act, e.g. covenanted areas, Nga Whenua Rauhi, Queen Elizabeth II Trust covenants, Reserve Management Plans, e.g. Taharua Domain, Reserve Management Plan;
- b) Sites where legal protection has been secured under the Resource Management Act 1991, e.g. Consent Notices, conditions on Resource Consents;
- c) Sites volunteered by landowners for protection;
- d) Department of Conservation's published Protected Natural Area Studies;
- e) Further potential sites, by reference to other published information and surveys undertaken by qualified personnel, including the report undertaken by Wildland Consultants (GIS Analysis of the Extent and Distribution of Indigenous Vegetation and Habitats Remaining in Kaipara District, 2006);
- f) Areas covered by Plans and Permits granted under the Forests Act 1949;
- g) Known high density kiwi habitat; and
- h) Northland Regional Council's Ecological Database.

As part of this database, Council will progressively compile electronic maps of the District, in collaboration with other key agencies, in particular the Department of Conservation and the Northland Regional Council. These maps will be initially used for education and the provision of information. Council will consider as part of the Long Term Plan planning cycle, whether a future Plan Change (including landowner consultation) should be undertaken to include these mapped areas and associated rules in the District Plan.

Education is an important method. The Council will provide information to landowners and the public generally about the existence and value of indigenous vegetation and habitats and the management of them. Information on management practices that protect kiwi and other indigenous fauna in exotic forests will be provided.

The Council will make available incentives (such as the Biodiversity Fund) to private landowners for protecting areas of significant indigenous vegetation and significant habitats of indigenous fauna.

Council will give advice to landowners on other sources of assistance available such as the Northland Regional Council Environment Fund, the Nature Heritage Fund and the QE II National Trust.

6.7.2.3 6.7.2.2 The Council will progressively develop guidelines to assist landowners in the protection and enhancement of ecological areas. These guidelines could include information on planting plans, weed management, wetland restoration and the covenanteeing of ecological features and potential economic benefits from this.

6.8 Outcomes

In addition to the District Wide Outcomes, the following Objectives apply:

- 6.8.1** Maintenance and enhancement of the biodiversity of indigenous plant and animal species within the Kaipara District and the natural habitats and ecosystems that support them. Issue 6.4.3
- 6.8.2** Significant indigenous vegetation, significant habitats of indigenous fauna and ecological corridors do not suffer further degradation, are protected and where possible are enhanced and expanded. Issue 6.4.2
- 6.8.3** Activities on or adjoining lakes and other sensitive receiving environments are managed to enhance the natural character values of these areas. Issues 6.4.1 and 6.4.6
- 6.8.4** A greater community awareness is developed of the type, location, significance and vulnerability of indigenous vegetation and habitats and the available methods of protection. Issues 6.4.4 and 6.4.5
- 6.8.5** An increase in those areas of significant indigenous vegetation and significant habitats of indigenous fauna, which are formally protected. Issues 6.4.1 and 6.4.5

6.9 Rules

Activities affected by this Chapter of the Plan must comply with the relevant standards applying to the Zone in which the activity is located (refer to Part B - Zone Chapters), and with other relevant provisions in Part C - Sites, Features and Units.

Particular attention is drawn to excavation and fill, vegetation clearance, setback rules within Chapters 12 -16 in Part B - Zone Chapters.

Appendix 20.1: Reserve Management Units

Reference	Map	Item	Classification of Reserve ¹	Administered / Owned By
RMU1	3,28	Aranga Beach Conservation Area	Conservation	Department of Conservation
RMU2	3	Aranga Station Road Local Purpose Reserve	Local Purpose	Kaipara District Council
RMU3	17,20,23	Arapoia River Scenic Reserve	Scenic	Department of Conservation
RMU4	10,13,14	Arapoia Local Purpose (Cemetery) Reserve	Cemetery	Kaipara District Council
RMU5	14,15	Ararua Hill Local Purpose Reserve	Local Purpose	Kaipara District Council
RMU6	18	Ararua Road Reserve	Road	Kaipara District Council
RMU7	13	Araitapu Hill Local Purpose Reserve	Local Purpose	Kaipara District Council
RMU8	7	Avoca Conservation Area	Conservation	Department of Conservation
RMU9	7	Awakino Government Purpose Wildlife Management Reserve	Wildlife	Department of Conservation
RMU10	10	Awakino Point East Road Local Purpose Reserve	Local Purpose	Kaipara District Council
RMU11	10	Awakino Point North Road Local Purpose Reserve	Local Purpose	Kaipara District Council
RMU12	9,10	Awakino River Marginal Strip No 2	Marginal Strip	Department of Conservation
RMU13	9,34	Awakino Road Reserve	Road	Kaipara District Council
RMU14	4,7	Awakino Stream Marginal Strip No 1	Marginal Strip	Department of Conservation
RMU15	18,19	Awaroa Conservation Area	Conservation	Department of Conservation
RMU16	1,3	Awatuna Cemetery (Closed) Local Purpose Reserve	Cemetery	Kaipara District Council
RMU17	9	Babyton Coast Road Recreation Reserve	Recreation	Office Of Treaty Settlements
RMU18	6	Babyton Marginal Strip	Marginal Strip	Department of Conservation
RMU19	9,33	Baylys Beach Local Purpose (Esplanade) Reserve	Esplanade	Kaipara District Council
RMU20	9,33	Baylys Beach Recreation Reserve	Recreation	Department of Conservation
RMU21	9,37	Beach Road Dargaville Other Reserve	Other	Kaipara District Council
RMU22	18	Black Lake Conservation Area	Conservation	Department of Conservation
RMU23	18,42	Bledisloe Street Drainage Access	Drainage	Kaipara District Council
RMU24	16,17	Brynderwyn Hills Scenic Reserve	Scenic	Department of Conservation

¹ Under the classification column the following classification types may apply:

- Resource Management Act 1991 (Esplanade Reserves and Esplanade Strips);
- Reserves Act 1977 (Historic, Scenic, Scientific, Local Purpose, Government Purpose, Nature and Recreation Reserves);
- Conservation Act 1987 (Conservation Purposes and Marginal Strips);
- Wildlife Act 1953 (Wildlife Management Reserve and Wildlife Refuge);
- Local Government Act 1974 (Road reserve); and
- Those classifications taken from the Reserves and Open Space Strategy 2006 (ROSS) for Kaipara District Council.

Reference	Map	Item	Classification of Reserve	Administered / Owned By
RMU25	16,17,20,21	Brynderwyn Water Supply Catchment	Water Supply	Kaipara District Council
RMU26	20	Calla Place Recreation Reserve	Recreation	Kaipara District Council
RMU27	17,21,55	Cheviot Street Recreation Reserve	Recreation	Kaipara District Council
RMU28	10	Clear Road Local Purpose (Esplanade) Reserve	Esplanade	Kaipara District Council
RMU29	19,43	Coates Memorial Church Local Purpose Reserve	Local Purpose	Coates Memorial Church Board
RMU30	9,34	Cobham Avenue Recreation Reserve	Recreation	Kaipara District Council
RMU31	15,16,20	Collins Scenic Reserve	Scenic, Conservation	Department of Conservation
RMU32	9,38,39	Colville Road Proposed Local Purpose Reserve	Proposed Local Purpose	Kaipara District Council
RMU33	18,19	Conservation Area	Conservation	Gwynn and Denise Powell
RMU34	17,21	Cook Creek Marginal Strip	Marginal Strip	Department of Conservation
RMU35	17,21	Cooks Stream Scenic Reserve	Scenic	Department of Conservation
RMU36	10,11	Curnow Road Conservation Area	Conservation	Department of Conservation
RMU37	10,11	Curnow Road Gemstone Conservation Area	Conservation	Department of Conservation
RMU38	20,50	Doctors Hill Road Local Purpose Reserve	Local Purpose	Kaipara District Council
RMU39	16	Dodd Road Conservation Area	Conservation	Department of Conservation
RMU40	3,27	Donnellys Crossing Marginal Strip	Conservation	Department of Conservation
RMU41	1	Donnellys Crossing Scenic Reserve	Scenic	Department of Conservation
RMU42	14	Dunn Road Drainage Purposes	Drainage	Kaipara District Council
RMU43	17,21,54	Fagen Place Reserve	Local Purpose	Kaipara District Council
RMU44	9,10,35	Finlayson Park Proposed Recreation Reserve	Proposed Recreation Reserve	Kaipara District Council
RMU45	2	Foster Road Local Purpose Reserve	Local Purpose	Kaipara District Council
RMU46	18,42	Freyberg Road Local Purpose Reserve	Local Purpose	Kaipara District Council
RMU47	17,21,53,54	Garbolino Road DoC Reserve	Conservation	Kaipara District Council
RMU48	20,21,51	Gibbons Road Local Purpose (Esplanade) Reserve	Esplanade	Kaipara District Council
RMU49	1,2	Gortie Scenic Reserve (Purchase)	Scenic	Department of Conservation
RMU50	9,10,35	Grey Street Local Purpose Reserve	Local Purpose	Kaipara District Council
RMU51	20,48	Griffin Road Water Supply Purposes	Water Supply	Kaipara District Council
RMU52	21	Hakaru Domain Recreation Reserve	Recreation	Kaipara District Council
RMU53	21,24	Hakaru River Marginal Strip No 1	Marginal Strip	Department of Conservation
RMU54	21	Hakaru River Marginal Strip No 2	Marginal Strip	Department of Conservation
RMU55	10	Hanlyns Bush Scenic Reserve	Scenic	Kaipara District Council
RMU56	9,36,39	Hartling Park Local Purpose Reserve	Local Purpose	Kaipara District Council
RMU57	13	Heavea Road Recreation Reserve	Recreation	Kaipara District Council

Reference	Map	Item	Classification of Reserve	Administered / Owned By
RMU92	27,3	Kaikōhe Road Recreation Reserve	Recreation	Kaipara District Council
RMU93	25	Kaipara Northland Lighthouse Historic Reserve	Historic	Historic Places Trust Of NZ
RMU94	24,26	Kaira Creek Local Purpose (Esplanade) Reserve	Esplanade	Kaipara District Council
RMU95	24,26	Kaira Creek Marginal Strip	Marginal Strip	Department of Conservation
RMU96	7	Kaitera Conservation Area	Conservation	Department of Conservation
RMU97	20,21,51	Kaiwaka (Sewage Treatment) Local Purpose Reserve	Local Purpose	Kaipara District Council
RMU98	20,21,51	Kaiwaka Local Purpose (Esplanade) Reserve	Esplanade	Kaipara District Council
RMU99	21	Kaiwaka Mangawhai Road Cemetery	Other	Kaipara District Council
RMU100	20,21,51	Kaiwaka Mangawhai Road Local Purpose Reserve	Local Purpose	Kaipara District Council
RMU101	20,21,51	Kaiwaka Marginal Strip	Marginal Strip	Department of Conservation
RMU102	20,21,51	Kaiwaka Park Domain Recreation Reserve	Recreation	Department of Conservation
RMU103	20	Kaiwaka River Local Purpose (Esplanade) Reserve	Esplanade	Kaipara District Council
RMU104	20	Kaiwaka River Marginal Strip No 1	Marginal Strip	Department of Conservation
RMU105	20	Kaiwaka River Marginal Strip No 2	Marginal Strip	Department of Conservation
RMU106	25	Kanono Conservation Area	Conservation	Department of Conservation
RMU107	19	Karakanui Road Local Purpose (Esplanade) Reserve	Esplanade	Kaipara District Council
RMU108	3	Katui Cemetery Local Purpose Reserve	Local Purpose	Department of Conservation
RMU109	3	Katui Scenic Reserve	Scenic	Department of Conservation
RMU110	19	Kauri Bushmans Memorial Scenic Reserve	Scenic	Department of Conservation
RMU111	9,34	Kauri Court Recreation Reserve	Recreation	Kaipara District Council
RMU112	22,56	Kaiyis Bay Recreation Reserve	Recreation	Kaipara District Council
RMU113	1,3	Kerr Road Landinfo	Treaty Redress Land Information	Te Rōma Whānui Ora Custodian Ltd Department of Conservation
RMU114	8	Kirikopuni Landing Reserve	Landing	Department of Conservation
RMU115	8	Kirikopuni Station Road Local Purpose Reserve	Local Purpose	Kaipara District Council
RMU116	19	Kohatutahi Conservation Area	Conservation	Department of Conservation
RMU117	19	Kohatutahi Marginal Strip	Marginal Strip	Department of Conservation
RMU118	23,26,59	Komiti Road Recreation Reserve	Recreation	Kaipara District Council
RMU119	13,16,41	Kopuru Beach Domain Recreation Reserve	Recreation	Department of Conservation
RMU120	18	Koreroa Marginal Strip	Marginal Strip	Land Information New Zealand
RMU121	25	Lake Humuhumu Marginal Strip	Marginal Strip	Department of Conservation
RMU122	25	Lake Kahuparere Marginal Strip	Marginal Strip	Department of Conservation
RMU123	25	Lake Kanono Marginal Strip	Marginal Strip	Department of Conservation

Reference	Map	Item	Classification of Reserve	Administered / Owned By
RMU58	7	Hoanga Road Local Purpose (Esplanade) Reserve	Esplanade	Kaipara District Council
RMU59	9,36,37	Hokiangā Road Reserve	Road	Kaipara District Council
RMU60	9,34,36	Hokiangā Road Water Supply Purposes	Water Supply	Kaipara District Council
RMU61	23	Hokoraka Creek Marginal Strip	Marginal Strip	Department of Conservation
RMU62	23	Hokoraka Creek Recreation Reserve	Recreation	Kaipara District Council
RMU63	5,7	Houto Forest (Pt Northland Conservation Park)	Conservation	Department of Conservation
RMU64	5	Houto Local Purpose (Quarry) Reserve	Conservation	Department of Conservation
RMU65	19	Hukitere Hill Recreation Reserve	Recreation	Department of Conservation
RMU66	19,23	Hukitere Scenic Reserve	Scenic	Department of Conservation
RMU67	19	Hukitere School Site Scenic Reserve	Scenic	Department of Conservation
RMU68	20,48	Humdall Street East DOC Reserve	Conservation	Kaipara District Council
RMU69	20,48	Humdall Street East Local Purpose (Community Hall)	Local Purpose	Kaipara District Council
RMU70	20,50	Humdall Street East Other Reserve	Other	Kaipara District Council
RMU71	20,48	Humdall Street West Local Purpose Reserve	Local Purpose	Kaipara District Council
RMU72	18,42	Jellicoe Street Local Purpose Reserve	Other	Kaipara District Council
RMU73	9,10,35	Jervois Road Local Purpose Reserve	Local Purpose	Kaipara District Council
RMU74	25,60	Kahuparere Conservation Area	Conservation	Department of Conservation
RMU75	25	Kahuparere Marginal Strip Esplanade Reserve	Marginal Strip Esplanade	Department of Conservation
RMU76	6,30	Kai Iwi Lakes Road Local Purpose Reserve	Local Purpose	Kaipara District Council
RMU77	6,30	Kai Iwi Recreation Reserve	Recreation	Kaipara District Council
RMU78	4	Kaihu Forest (Pt Northland Conservation Park)	Conservation	Department of Conservation
RMU79	3,4,29	Kaihu Local Purpose Reserve	Local Purpose	Kaipara District Council
RMU80	27,29,34	Kaihu North Railway Line Conservation Area	Conservation	Department of Conservation
RMU81	4,29	Kaihu Railway Line Conservation Area	Conservation	Department of Conservation
RMU82	4	Kaihu River Esplanade Reserve	Local Purpose	Kaipara District Council
RMU83	3	Kaihu River Marginal Strip No 1	Marginal Strip	Department of Conservation
RMU84	3,4,29	Kaihu River Marginal Strip No 2	Marginal Strip	Department of Conservation
RMU85	3,4,29	Kaihu River Marginal Strip No 3	Marginal Strip	Department of Conservation
RMU86	9	Kaihu River Marginal Strip No 4	Marginal Strip	Department of Conservation
RMU87	9	Kaihu River Marginal Strip No 5	Marginal Strip	Department of Conservation
RMU88	9,37,38	Kaihu River Marginal Strip No 6	Marginal Strip	Department of Conservation
RMU89	4,6,7	Kaihu Scenic Reserve	Scenic	Department of Conservation
RMU90	3,4,29	Kaihu Wood Road Local Purpose Reserve	Local Purpose	Kaipara District Council
RMU91	1,3	Kaikōhe Road Marginal Strip	Marginal Strip	Department of Conservation

Reference	Map	Item	Classification of Reserve	Administered / Owned By
RMU161	9,38	Local Purpose Reserve (Esplanade)	Esplanade	Kaipara District Council
RMU162	17,21,54,55	Local Purposes (Esplanade) / Reserve	Esplanade	Kaipara District Council
RMU163	9,39,	Logan Street Dargaville DoC Reserve	Conservation	Kaipara District Council
RMU164	9,37,	Logan Street Dargaville Proposed Local Purpose Res	Proposed Local Purpose	Kaipara District Council
RMU165	9,37,38,	Logan Street Dargaville Recreation Reserve	Recreation	Kaipara District Council
RMU166	17,21,	Lois Winties Bush Scenic Reserve	Scenic	Arnott, Frank David and Beverly Florence
RMU167	19,20,	Lower Pahi River Scenic Reserve	Scenic	Department of Conservation
RMU168	18,	Lucich Road Marginal Strip	Marginal Strip	Department of Conservation
RMU169	6,	Maitahi Wetland Scientific Reserve	Scientific	Department of Conservation
RMU170	7,	Mamaranui Farm Settlement Scenic Reserve	Conservation, Scenic	Department of Conservation
RMU171	2,	Mangakahia River Marginal Strip No 4	Marginal Strip	Department of Conservation
RMU172	11,	Manganui River (Govt Purpose) Wildlife Management	Wildlife	Department of Conservation
RMU173	10,	Manganui River Marginal Strip No 1	Marginal Strip	Department of Conservation
RMU174	10,	Manganui River Marginal Strip No 2	Marginal Strip	Department of Conservation
RMU175	11,	Manganui River Marginal Strip No 4	Marginal Strip	Department of Conservation
RMU176	14,	Manganui River Marginal Strip No 5	Marginal Strip	Department of Conservation
RMU177	17,21,53,54,55,	Mangawhai (Govt Purpose) Wildlife Refuge Reserve	Wildlife	Department of Conservation
RMU178	17,21,54,	Mangawhai DOC (Esplanade) Reserve	Esplanade Conservation	Kaipara District Council Department of Conservation
RMU179	21,57,	Mangawhai Domain	Fee Simple	Mangawhai Domain Society
RMU180	17,21,54,55,56,	Mangawhai Harbour Marginal Strip No 1	Marginal Strip	Department of Conservation
RMU181	17,21,57,	Mangawhai Harbour Marginal Strip No 3	Marginal Strip	Department of Conservation
RMU182	17,21,53,54,55,56,57,	Mangawhai Heads Recreation (Esplanade) Reserve	Recreation	Kaipara District Council
RMU183	12,	Mangawhai River Marginal Strip	Marginal Strip	Department of Conservation
RMU184	18,19,	Mapau Domain Recreation Reserve	Recreation	Kaipara District Council
RMU185	12,15,	Marere Forest Conservation Area	Conservation	Department of Conservation
RMU186	17,21,54,	Margaret Street Recreation Reserve	Recreation	Kaipara District Council
RMU187	4,	Mariborough Cemetery Conservation Area	Conservation	Department of Conservation
RMU188	2,	Mariborough Forest Conservation Area	Conservation	Department of Conservation
RMU189	2,3,4,	Mariborough Forest (Pt Northland Coris, Park)	Conservation	Department of Conservation
RMU190	1,3,	Mariborough Road Scenic Reserve	Scenic	Department of Conservation

Reference	Map	Item	Classification of Reserve	Administered / Owned By
RMU124	25	Lake Rotokawau (Pou) Marginal Strip	Marginal Strip	Department of Conservation
RMU125	25	Lake Robotoauaru Marginal Strip	Marginal Strip	Department of Conservation
RMU126	25	Lake Waingata Marginal Strip	Marginal Strip	Department of Conservation
RMU127	14,	Landinfo Access Road Ruawai	Land Information	Land Information New Zealand
RMU128	3,28,	Landinfo Aranga Coast Rd	Land Information	Land Information New Zealand
RMU129	9,	Landinfo Babylon Coast Road	Land Information	Land Information New Zealand
RMU130	9,	Landinfo Bayllys Coast Road	Local Purpose	Kaipara District Council
RMU131	14,	Landinfo Birch Road Parahi	Land Information	Land Information New Zealand
RMU132	12,15,	Landinfo Bull Road Maungaturoto	Land Information	Land Information New Zealand
RMU133	15,	Landinfo Causer Road Waitere	Land Information	Land Information New Zealand
RMU134	14,	Landinfo Dunn Road Ruawai	Marginal Strip	Stanevay and Hammonds Trustees
RMU135	15,	Landinfo Golden Stairs Road	Land Information	Land Information New Zealand
RMU136	13,	Landinfo Guy Road	Land Information	Land Information New Zealand
RMU137	19,20,44,	Landinfo Hook Road Reserve	Land Information	Land Information New Zealand
RMU138	3,27,	Landinfo Katui Road	Land Information	Land Information New Zealand
RMU139	22,58,	Landinfo Kellys Bay Road Punahaere Creek	Land Information	Land Information New Zealand
RMU140	3,	Landinfo Maunganui Bluff	Land Information	Department of Conservation
RMU141	20,47,	Landinfo Maungaturoto Station	Land Information	Land Information New Zealand
RMU142	12,	Landinfo Milbrook Road	Land Information	Land Information New Zealand
RMU143	4,	Landinfo Nichols Road	Land Information	Land Information New Zealand
RMU144	19,	Landinfo Okuhanga Road	Land Information	Land Information New Zealand
RMU145	15,	Landinfo Porter Road Aranua	Land Information	Land Information New Zealand
RMU146	25,	Landinfo Pouto Point	Marginal Strip	Enviros Holding Ltd
RMU147	13,	Landinfo Pouto Road	Land Information	Land Information New Zealand
RMU148	20,21,24,	Landinfo SH1 Kaiwaka	Land Information	Land Information New Zealand
RMU149	20,	Landinfo SH12 Bryndenwyn	Land Information	Land Information New Zealand
RMU150	1,3,	Landinfo SH12 Dargaville-Waipoua	Land Information	Land Information New Zealand
RMU151	3,4,28,	Landinfo SH12 Kaihu	Land Information	Land Information New Zealand
RMU152	8,	Landinfo SH14 Tangiteroria	Land Information	New Zealand Transport Authority
RMU153	5,	Landinfo Tangowahine Valley Road	Land Information	Land Information New Zealand
RMU154	13,	Landinfo Tatarakihi Spur Road	Land Information	Land Information New Zealand
RMU155	13,14,	Landinfo Tokatoka Road	Land Information	Land Information New Zealand
RMU156	13,	Landinfo Turkey Flat Road	Marginal Strip	McCahon, Robert Joseph
RMU157	3,6,30	Landinfo Waihaupai Stream	Land Information	Land Information New Zealand
RMU158	7,9,	Landinfo Waihue Road	Land Information	Land Information New Zealand
RMU159	9,13	Landinfo Wesley Coast Road	Land Information	Land Information New Zealand
RMU160	19,43,	Local Purpose (Cemetery) Reserve	Local Purpose	Kaipara District Council

Reference	Map	Item	Classification of Reserve	Administered / Owned By
RMU222	14, 18,	Naumal Domain Recreation Reserve	Recreation	Kaipara District Council
RMU223	23,26,59,	Ngatoto Road Recreation Reserve	Recreation	Education Ministry
RMU224	20,48,	Nikau Grove Scenic Reserve	Scenic	Kaipara District Council
RMU225	9,10,35	Northern Wairoa Aero Club	Recreation Club	Kaipara District Council
RMU226	13,40,	Norton Street Local Purpose Reserve	Local Purpose	Kaipara District Council
RMU227	6,	Omamari Govt Purpose Wildlife Management Reserve	Wildlife	Department of Conservation
RMU228	6,32,	Omamari Local Purpose Reserve	Local Purpose	Kaipara District Council
RMU228	6,32,	Omamari Marginal Strip	Marginal Strip	Department of Conservation
RMU230	8,10,11	Omana War Memorial Local Purpose Reserve	Local Purpose	Kaipara District Council
RMU231	14,15,	Omanu River Conservation Area	Conservation	Kaipara District Council
RMU232	20,24,	Oneriti Road Local Purpose (Esplanade) Reserve	Esplanade	Kaipara District Council
RMU233	4,	Opoutake Stream Marginal Strip No 3	Marginal Strip	Department of Conservation
RMU234	26,	Oruawhoro River Marginal Strip	Marginal Strip	Department of Conservation
RMU235	24,26,	Oruawhoro Road Local Purpose (Esplanade) Reserve	Esplanade	Kaipara District Council
RMU236	24,	Otamatea River Marginal Strip No 1	Marginal Strip	Department of Conservation
RMU237	20,24,	Otamatea River Marginal Strip No 2	Marginal Strip	Department of Conservation
RMU238	5,8,	Paeata Government Purpose Wildlife Management Res	Wildlife	Department of Conservation
RMU239	8,31	Paeata Road Local Purpose Reserve	Local Purpose	Kaipara District Council
RMU240	19,46,	Pahi Domain Recreation Reserve	Recreation	Department of Conservation
RMU241	19,46,	Pahi Local Purpose (Esplanade) Reserve	Esplanade	Kaipara District Council
RMU242	19,20,	Pahi River Local Purpose (Esplanade) Reserve	Esplanade	Kaipara District Council
RMU243	19,	Pahi River Local Purpose Reserve	Local Purpose	Kaipara District Council
RMU244	19,	Pahi Road Cemetery Reserve	Cemetery	Kaipara District Council
RMU245	19,	Paparaoa Creek Marginal Strip No 1	Marginal Strip	Department of Conservation
RMU246	19,	Paparaoa Creek Marginal Strip No 2	Marginal Strip	Department of Conservation
RMU247	19,45,	Paparaoa Creek Recreation Reserve	Recreation	Kaipara District Council
RMU248	19,	Paparaoa Creek Scenic Reserve	Scenic	Department of Conservation
RMU249	19,45,	Paparaoa Local Purpose (Esplanade) Reserve	Esplanade	Department of Conservation
RMU250	15,19,44,	Paparaoa Oakleigh Road Drainage	Drainage	Kaipara District Council
RMU251	19,45,	Paparaoa SH12 Local Purpose Reserve	Local Purpose	Kaipara District Council
RMU252	19,44,45,	Paparaoa Stream Local Purpose (Esplanade) Reserve	Esplanade	Education Ministry
RMU253	14,	Parahi Conservation Area	Conservation	Department of Conservation
RMU254	14,	Parahi Scenic Reserve	Scenic	Department of Conservation

Reference	Map	Item	Classification of Reserve	Administered / Owned By
RMU191	4,	Marlborough School Conservation Area	Conservation	Department of Conservation
RMU192	6,	Maropiu Bush Scenic Reserve	Scenic	Kaipara District Council
RMU193	19,	Matakohe Creek DOC Reserve	Conservation	Kaipara District Council
RMU194	19,43,	Matakohe Creek Local Purpose (Esplanade) Reserve	Esplanade	Kaipara District Council
RMU195	19,43,	Matakohe Local Purpose Reserve	Local Purpose	Kaipara District Council
RMU196	19,43,	Matakohe Recreation Reserve	Recreation	Kaipara District Council
RMU197	19,	Matakohe River Scenic Reserve	Scenic	Department of Conservation
RMU198	19,	Matakohe Wharf Road Recreation Reserve	Recreation	Kaipara District Council Kaipara District Council
RMU199	18,	Matangini Conservation Area	Conservation	Department of Conservation
RMU200	1,2,	Mataraua Forest (Pt Northland Conservation Park)	Conservation	Department of Conservation
RMU201	3,25,	Maunganui Bluff Recreation Reserve	Recreation	Kaipara District Council
RMU202	3,25,	Maunganui Bluff Scenic Reserve	Scenic	Te Roroa Manawhenua Custodian Ltd Land-Information New-Zealand
RMU203	13,14,	Maunganuihoro Rock Scenic Reserve	Scenic	Kaipara District Council
RMU204	20,50,	Maungaturoto Conservation Area	Conservation	Department of Conservation
RMU205	20,50,	Maungaturoto Local Purpose (Esplanade) Reserve	Esplanade	Kaipara District Council
RMU206	20,50,	Maungaturoto Marginal Strip	Marginal Strip	Department of Conservation
RMU207	16,	Maxwell Creek Marginal Strip	Marginal Strip	Department of Conservation
RMU208	19,	McCallife Road Local Purpose (Esplanade) Reserve	Esplanade	Kaipara District Council
RMU209	11,	Miffital Road Conservation Area	Conservation	Department of Conservation
RMU210	17,21,	Molesworth Conservation Area	Conservation	Department of Conservation
RMU211	17,21,54,	Molesworth Drive Bowling Club Reserve	Recreation Club	Kaipara District Council
RMU212	17,21,54, 55,56,	Molesworth Drive Local Purpose Reserve	Local Purpose	Kaipara District Council
RMU213	17,21,54,	Molesworth Drive Other Reserve	Other	Kaipara District Council
RMU214	17,21,54,	Molesworth Drive Recreation Reserve	Recreation	Kaipara District Council
RMU215	17,21,	Molesworth Local Purpose (Esplanade) Reserve	Esplanade	Kaipara District Council
RMU216	13,14,	Montgomery Memorial Bush Scenic Reserve	Scenic	Department of Conservation
RMU217	9,34,	Montgomery Avenue Recreation Reserve (playground)	Recreation	Kaipara District Council
RMU218	6,9,	Moromunui	Historic	
RMU219	9,39,	Mt Wesley Cemetery Local Purpose Reserve	Cemetery	Kaipara District Council
RMU220	9,39,	Mt Wesley Coast Road Cemetery Reserve	Cemetery	Kaipara District Council
RMU221	1,3,	Muniwai Conservation Area	Conservation	Department of Conservation

Reference	Map	Item	Classification of Reserve	Administered / Owned By
RMU289	18.42	Ruawai Football Club	Recreation Club	Kaipara District Council
RMU290	18.42	Ruawai Recreation Reserve	Recreation	Kaipara District Council
RMU291	18.42	Ruawai War Memorial Hall	Local Purpose	Kaipara District Council
RMU292	18.22	Schick Road Conservation Area	Conservation	Department of Conservation
RMU293	9, 10, 35,	Selwyn Park Recreation Reserve	Recreation Dept - of Conservation	Kaipara District Council
RMU294	3, 6,	Shag Lake Marginal Strip	Marginal Strip	Department of Conservation
RMU295	25.60,	Signal Station Road Esplanade Reserve	Esplanade	Department of Conservation
RMU296	14, 19,	Smoky Hill Scenic Reserve	Scenic	Department of Conservation
RMU297	19,	Sterling Road Local Purpose (Esplanade) Reserve	Esplanade	Kaipara District Council
RMU298	1, 3,	Taha Moana Scenic Reserve	Scenic	Department of Conservation
RMU299	3, 6, 30,	Taharoa Domain Recreation Reserve	Conservation, Recreation	Kaipara District Council
RMU300	24,	Takahoa Local Purpose (Esplanade) Reserve	Esplanade	Kaipara District Council
RMU301	24,	Takahoe Government Purpose Wildlife Management Reserve	Wildlife	Department of Conservation
RMU302	11,	Tangihua Access Conservation Area	Conservation	Department of Conservation
RMU303	8, 11,	Tangihua Forest (Pt Northland Conservation Park)	Conservation	Department of Conservation
RMU304	22,	Tangitiki Bay Landing Reserve	Landing Reserve	Department of Conservation
RMU305	22,	Tangitiki Bay Marginal Strip No 1	Marginal Strip	Department of Conservation
RMU306	22, 56,	Tangitiki Bay Marginal Strip No 2	Marginal Strip	Department of Conservation
RMU307	22, 56,	Tangitiki Conservation Area	Conservation	Department of Conservation
RMU308	7, 9, 10	Tangowahine Local Purpose Reserve	Local Purpose	Kaipara District Council
RMU309	7, 8, 10,	Tangowahine Scenic Reserve	Scenic	Department of Conservation
RMU310	5,	Tangowahine Stream Marginal Strip No 1	Marginal Strip	Department of Conservation
RMU311	5,	Tangowahine Stream Marginal Strip No 2	Marginal Strip	Department of Conservation
RMU312	5, 7,	Tangowahine Stream Marginal Strip No.3	Marginal Strip	Department of Conservation
RMU313	17, 21,	Tara Creek Marginal Strip	Marginal Strip	Department of Conservation
RMU314	17, 21,	Tara Road Cemetery Reserve	Cemetery	Kaipara District Council
RMU315	17, 21, 57,	Tara Road Local Purpose (Esplanade) Reserve	Esplanade	Kaipara District Council
RMU316	7,	Taraire Scenic Reserve	Scenic	Department of Conservation
RMU317	13,	Tatariki Conservation Area	Conservation	Department of Conservation
RMU318	25, 60,	Tauhara Creek Marginal Strip	Marginal Strip	Department of Conservation
RMU319	25,	Tauhara Marginal Strip	Marginal Strip	Department of Conservation
RMU320	17, 20, 21,	Te - Uri - O - Hau Scenic Reserve	Scenic	Department of Conservation
RMU321	14,	Te Awaoteaohi Conservation Area	Conservation	Department of Conservation

Reference	Map	Item	Classification of Reserve	Administered / Owned By
RMU255	24,	Parekura Road Local Purpose (Esplanade) Reserve	Esplanade	Kaipara District Council
RMU256	17, 21, 57,	Pearson Street Local Purpose Reserve	Local Purpose	Kaipara District Council
RMU257	19,	Peitsey Road Recreation Reserve	Recreation	Kaipara District Council
RMU258	9, 36, 39,	Pou-Tu-Ote-Rangi Pa Historic Reserve	Historic	Kaipara District Council
RMU259	25,	Pou Conservation Area	Conservation	Department of Conservation
RMU260	25,	Pou Lakes Marginal Strip	Marginal Strip	Department of Conservation
RMU261	25, 60,	Pou Marginal Strip	Marginal Strip	Department of Conservation
RMU262	18, 22, 25,	Pou North Conservation Area	Conservation	Department of Conservation
RMU263	18, 22, 25,	Pou North Marginal Strip	Marginal Strip	Department of Conservation
RMU264	25, 60,	Pou Point Local Purpose (Community Hall) Reserve	Local Purpose	Land Information New Zealand
RMU265	25, 60,	Pou Point Local Purpose (Esplanade) Reserve	Esplanade	Education Ministry
RMU266	9, 10,	Pou Road Esplanade Reserve	Esplanade	Kaipara District Council
RMU267	20,	Pukearanga Scenic Reserve	Scenic	Department of Conservation
RMU268	8,	Pukehina Local Purpose Reserve	Local Purpose	Kaipara District Council
RMU269	17, 20, 21,	Pukekoro Scenic Reserve	Scenic	Department of Conservation
RMU270	12, 15,	Pukekoro Hill Scenic Reserve	Scenic	Department of Conservation
RMU271	25,	Pukekura Historic Area	Historic	Department of Conservation
RMU272	22, 58,	Punahaere Creek Conservation Area	Conservation	Department of Conservation
RMU273	22, 58,	Punahaere Government Purpose Wildlife Management Reserve	Conservation	Department of Conservation
RMU274	20, 21, 52,	Puwel Street Recreation Reserve	Recreation	Kaipara District Council
RMU275	23,	Raeperu Creek Marginal Strip	Marginal Strip	Department of Conservation
RMU276	18, 42,	Raupo Wharf Road Local Purpose Reserve	Local Purpose Conservation	Kaipara District Council
RMU277	3, 28,	Recreation Reserve (Aranga Beach)	Recreation	Kaipara District Council
RMU278	13,	Redhill Cemetery Local Purpose (Cemetery) Reserve	Cemetery	Kaipara District Council
RMU279	9,	Rehuti Conservation Area	Conservation	Department of Conservation
RMU280	9,	Rehuti Marginal Strip	Marginal Strip	Department of Conservation
RMU281	13,	Repia Conservation Area	Conservation	Kaipara District Council
RMU282	13, 14,	Repia Conservation Reserve	Conservation	Kaipara District Council
RMU283	17,	Robert Hasle Memorial Scenic Reserve	Scenic	Department of Conservation
RMU284	19,	Rocky Creek Cemetery Reserve	Cemetery	Kaipara District Council
RMU285	25,	Rotopoua Creek Conservation Area	Conservation	Department of Conservation
RMU286	22,	Rototuna Lakes Conservation Area	Conservation	Department of Conservation
RMU287	12,	Ruarangi Conservation Area	Conservation	Department of Conservation
RMU288	18, 42,	Ruawai Conservation Area	Conservation	Department of Conservation

Reference	Map	Item	Classification of Reserve	Administered / Owned By
RMU356	20,50,	View Street Local Purpose Reserve	Local Purpose	Kaipara District Council
RMU357	20,50,	View Street Recreation Reserve	Recreation	Kaipara District Council
RMU358	7,	Waihue Road Local Purpose Reserve	Local Purpose	Kaipara District Council
RMU359	4,7,	Waimata Settlement Scenic Reserve	Scenic	Department of Conservation
RMU360	2,	Waimateui Cemetery (Closed) Local Purpose Reserve	Cemetery	Manakahiua Forest Land Ltd Department of Conservation
RMU361	13,18,	Wainui Lake Conservation Area	Conservation	Department of Conservation
RMU362	2,	Waikukurau Local Purpose Esplanade Reserve	Marginal Strip	Department of Conservation
RMU363	2,	Waikukurau Stream Marginal Strip No 1	Marginal Strip	Department of Conservation
RMU364	2,	Waikukurau Stream Marginal Strip No 2	Marginal Strip	Department of Conservation
RMU365	8,	Waiohama Scenic Reserve	Scenic	Department of Conservation
RMU366	1,2,3,	Waipoua Forest (Pt Northland Conservation Park)	Conservation	Department of Conservation
RMU367	1,	Waipoua River Conservation Area	Conservation	Department of Conservation
RMU368	16,	Waipoua Gorge Scenic Reserve	Scenic	Department of Conservation
RMU369	20,	Wairau River Local Purpose (Esplanade) Reserve	Esplanade	Kaipara District Council
RMU370	20,	Wairau River Marginal Strip	Marginal Strip	Department of Conservation
RMU371	13,40,	Wairoa River Local Purpose (Esplanade) Reserve	Esplanade, Local Purpose	Kaipara District Council Department of Conservation
RMU372	7,10,	Wairoa River Marginal Strip No 1	Marginal Strip	Department of Conservation
RMU373	18,19,	Wairoa River Marginal Strip No 10	Marginal Strip	Department of Conservation
RMU374	13,	Wairoa River Marginal Strip No 11	Marginal Strip	Department of Conservation
RMU375	7,8,10,	Wairoa River Marginal Strip No 2	Marginal Strip	Department of Conservation
RMU376	7,8,10,	Wairoa River Marginal Strip No 3	Marginal Strip	Department of Conservation
RMU377	10,	Wairoa River Marginal Strip No 4	Marginal Strip	Department of Conservation
RMU378	8,	Wairoa River Marginal Strip No 5	Marginal Strip	Department of Conservation
RMU379	13,14,	Wairoa River Marginal Strip No 6	Marginal Strip	Department of Conservation
RMU380	18,	Wairoa River Marginal Strip No 7	Marginal Strip	Department of Conservation
RMU381	18,19,22,	Wairoa River Marginal Strip No 8	Marginal Strip	Department of Conservation
RMU382	18,42,	Wairoa River Marginal Strip No 9	Marginal Strip	Department of Conservation
RMU383	13,	Whakahana Conservation Area	Conservation	Department of Conservation
RMU384	24,26,	Whakaki River Local Purpose (Esplanade) Reserve	Esplanade	Kaipara District Council Department of Conservation
RMU385	19,46,	Whakapirau Conservation Area	Conservation	Department of Conservation
RMU386	20,	Whakapirau Creek Conservation Area	Conservation	Department of Conservation
RMU387	19,46,	Whakapirau Local Purpose (Cemetery) Reserve	Cemetery	Diocese of Auckland Trust Board
RMU388	19,46,	Whakapirau Local Purpose (Esplanade) Reserve	Esplanade	Kaipara District Council

Reference	Map	Item	Classification of Reserve	Administered / Owned By
RMU322	23	Te Kaitia Bay Marginal Strip	Marginal Strip	Department of Conservation
RMU323	13,40,	Te Kopuru Recreation Reserve	Recreation	Kaipara District Council Department of Conservation
RMU324	23,	Te Kowhai Creek Scenic Reserve	Scenic	Department of Conservation
RMU325	18,	Te Maire Road Local Purpose (Community Hall) Reser	Local Purpose	Kaipara District Council Department of Conservation
RMU326	20,	Te Opu Scenic Reserve	Scenic	Department of Conservation
RMU327	17,21,55,56,	Theilma Road Local Purpose Reserve	Local Purpose	Kaipara District Council
RMU328	9,33,	Thorne Plantation Scenic Reserve	Scenic	Kaipara District Council
RMU329	18,22,	Tikinui Conservation Area	Conservation	Department of Conservation
RMU330	19,	Tinopai Road DOC Esplanade Reserve	Conservation	Kaipara District Council
RMU331	19,23,26,59,	Tinopai Road Local Purpose (Esplanade) Reserve	Esplanade	Kaipara District Council
RMU332	23,	Titipu Island Recreation Reserve	Conservation	Department of Conservation
RMU333	13,14,	Tokatoka Conservation Area	Conservation	Department of Conservation
RMU334	13,14,	Tokatoka Local Purpose (Cemetery) Reserve	Cemetery	Kaipara District Council
RMU335	13,14,	Tokatoka Scenic Reserve	Conservation	Department of Conservation
RMU336	21,	Tomarata Road Local Purpose Reserve	Local Purpose	Kaipara District Council
RMU337	22,	Tomb Point Conservation Area	Conservation	Department of Conservation
RMU338	22,	Tomb Point Marginal Strip	Marginal Strip	Department of Conservation
RMU339	24,	Topuni Conservation Area	Conservation	Department of Conservation
RMU340	24,	Topuni Landing Reserve	Recreation	Department of Conservation
RMU341	24,	Topuni Scenic Reserve	Scenic	Department of Conservation
RMU342	24,	Topuni Scenic Reserve Addition	Scenic	Department of Conservation
RMU343	9,36,	Tolara Street Local Purpose Reserve	Local Purpose	Kaipara District Council
RMU344	3,	Trounson Addition Scenic Reserve	Scenic	Department of Conservation
RMU345	3,27,	Trounson Kauri Park Scenic Reserve	Scenic	Department of Conservation
RMU346	10,	Turwiri Bush Scenic Reserve	Scenic	Kaipara District Council
RMU347	9,37,38	Turwiri West Road Esplanade Reserve	Esplanade	Kaipara District Council
RMU348	1,2,	Tutamoe Cemetery Local Purpose Reserve	Cemetery	Kaipara District Council
RMU349	1,2,	Tutamoe Domain Recreation Reserve	Recreation	Kaipara District Council Department of Conservation
RMU350	2,	Tutamoe Scenic Reserve	Scenic	Department of Conservation
RMU351	19,20,	Upper Pahū River Scenic Reserve	Scenic	Department of Conservation
RMU352	19,45,	Upper Paparoa Creek Scenic Reserve	Scenic	Department of Conservation
RMU353	6,	Ureiti Camping Reserve	Recreation	Te Roroa Whaiti Ora Custodian Ltd Department of Conservation
RMU354	3,6,30	Ureiti Marginal Strip	Marginal Strip	Department of Conservation
RMU355	3,6,	Ureiti Scenic and Camping Reserves	Recreation	Te Roroa Whaiti Ora Custodian Ltd Department of Conservation

Reference	Map	Item	Classification of Reserve	Administered / Owned By
RMU389	20	Whakapirau River Scenic Reserve	Scenic	Department of Conservation
RMU390	18, 18	Whakatu Conservation Area	Conservation	Department of Conservation
RMU391	3	Whatoro Conservation Area	Conservation	Department of Conservation
RMU392	14	Whenuanui Domain Recreation Reserve	Recreation	Kaipara District Council
RMU393	14	Whenuanui Scenic Reserve	Scenic	Kaipara District Council
RMU394	17, 21, 53	Wintle Street Local Purpose Reserve	Local Purpose	Kaipara District Council
RMU395	17, 21, 54	Wood Street Local Purpose Reserve	Local Purpose	Kaipara District Council
RMU396	3	Waihaupai Stream Marginal Strip	Marginal Strip	Department of Conservation
RMU397	3	Mangonui Bluff Marginal Strip	Marginal Strip	Department of Conservation
RMU398	13	Mahute Gap Marginal Strip	Marginal Strip	Department of Conservation

Sites of Ecological Significance to the Department of Conservation

All those sites containing indigenous vegetation or habitat ranked moderate-high, high or outstanding on the Sites of Significant Biological Interest (SSBI) database or equivalent under the Department of Conservation's Protected Natural Areas (PNA) Programme in the absence of an assessment of the ranking of an ecological feature, assessments of significance and ranking are based on the criteria contained in Appendix 45G - Assessment of Ecological Significance in Part D of the Plan.

A site or area containing indigenous vegetation or habitat considered moderate, moderate-high, high or outstanding based on an assessment of that ecological feature. Assessments of significance and ranking are to be based on the criteria contained in Appendix 25G - Assessment of Ecological Significance in Part D of the Plan.

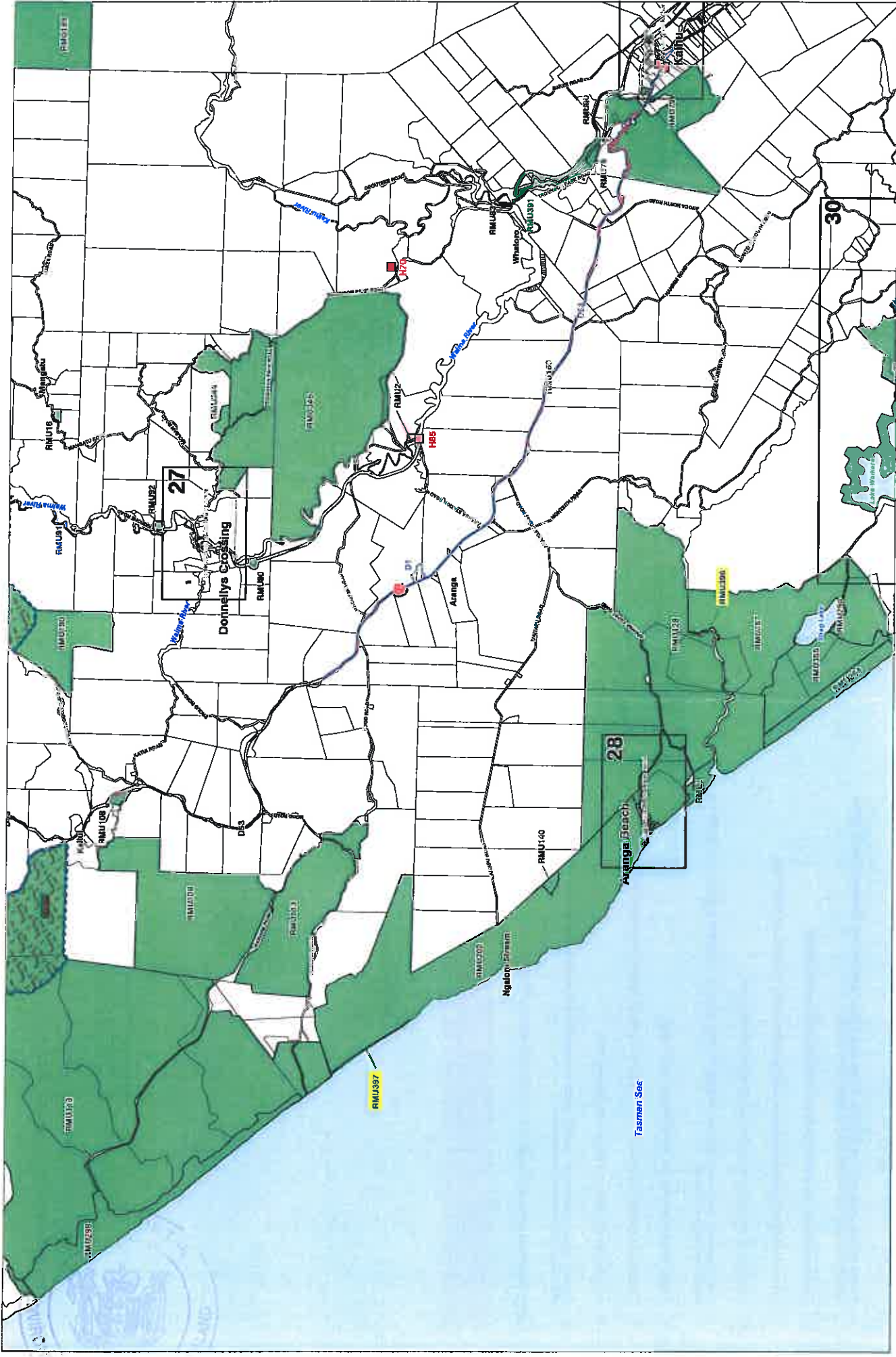
25G Assessment of Ecological Significance

~~In the absence of an~~ An assessment of the ranking of an ecological feature, assessments of significance and ranking shall be based on the following criteria:

1. Contain critical, endangered, vulnerable, or rare taxa, taxa of indeterminate threatened status (sensu International Union for Conservation of Nature definitions).
2. Contain indigenous or endemic taxa that are threatened or rare in Northland.
3. Contain the best representative examples in an ecological district of a particular habitat type.
4. Have high density of taxa or habitat types for the ecological district.
5. Form ecological buffers, linkages or corridors to other areas of significant vegetation or significant habitats of indigenous fauna.
6. Contain habitat types that are rare in the ecological district.
7. Support good populations of taxa which are endemic to the Northland or Northland-Auckland regions.
8. Are important for indigenous or endemic migratory taxa.
9. Support viable populations of species, which are typical of that habitat type within an ecological district and retain a high degree of naturalness.

Note 1: Significant indigenous wetlands are a subset of indigenous wetlands.

Note 2: Existing base-line information on ranking and identification of areas of moderate, moderate-high, high and outstanding significance is provided on the Sites of Significant Biological Interest (SSBI) database and under the Department of Conservation's Protected Natural Areas (PNA) Programme and may be available as source information for the above assessment criteria.



N

Map 3 of 60

KAIPARA DISTRICT FLAP - MEDIATION VERSION - FEBRUARY 2010

Map Series Two

Sites, Features and Units

Scale: 1:50,000 @ A3

Contains Crown Copyright Data. Crown Copyright Reserved.
 This map is a reproduction of the information contained in the
 information supplied to Kaipara District Council for any purpose. All intellectual
 property rights in this database layer and the data in it being exclusively to
 Kaipara District Council. This map is a reproduction of the information
 information is provided to Kaipara District Council. Transducer have provided
 accepts no responsibility for any errors, omissions or inaccuracies in the information

KAIPARA DISTRICT

KAIPARA DISTRICT COUNCIL

