

# Kaipara District Council

## Representation Review 2018

Workshop 2, 30 May 2018

Dale Ofoske, Electoral Officer



## Programme Overview

- Welcome and introductions
- Background
- Council preference
- Preliminary consultation
- Options investigated
- Direction
- Timetable

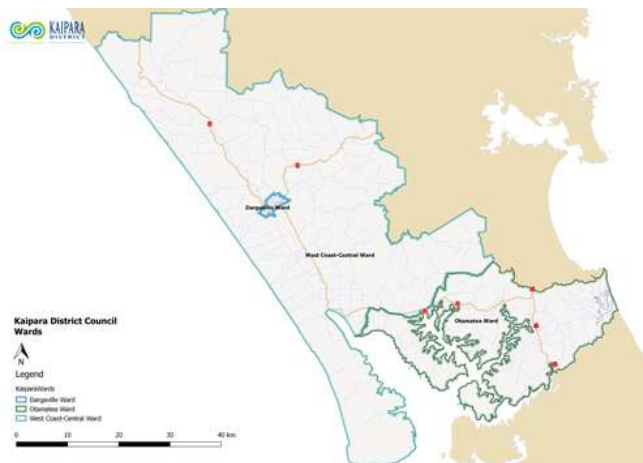


## Background

- Current arrangements:
  - 8 councillors plus mayor
  - 3 wards
    - Dargaville (2)
    - Otamatea (3)
    - West Coast/Central (3)
  - no community boards
  - status quo does not comply with +/- 10% rule
    - Otamatea Ward (400 people too many)



## Background



## Background

Population Statistics (Estimated Resident Population 30 June 2017)

**Status quo: 22,530/8 members = 2,816 +/- 10% = 2,534 – 3,097**

Status quo wards not comply with fair representation (+/- 10% rule)

Ward	Pop	Cnrs	Average	Fits Rule	% Variation
Dargaville	5,080	2	2,540	Yes	-9.8%
Otamatea	9,670	3	3,223	No	+14.45%
West Coast/Central	7,780	3	2,593	Yes	-7.92%



## Background

– last review in 2012 (for 2013, 2016 elections)

- initial proposal 9 councillors, 3 wards
- 403 submissions received (mainly against increase to 9 councillors)
- final proposal 8 councillors, 3 wards
- one appeal received, sent to LGC
- LGC supported Council's final proposal
- no election 2013 (commissioners), this basis used for 2016 election



## Background

- Workshop 1 (13 April 2018)
    - what is a representation review?
    - what needs to be considered?
      - identify communities of interest
      - provide effective representation (number councillors, wards, 'at large' etc)
      - provide fair representation (each councillor represents about same number people, +/- 10%)
      - community boards
- 



## Background

- possible options
    - (1) 8 councillors, 3 wards, no community boards (status quo) - non-compliant
    - (2) 8 councillors, 4 wards, no community boards
    - (3) 9 councillors, 4 wards, no community boards
    - (4) 7 councillors, 4 wards, no community boards
    - (5) 8 councillors, 4 elected 'at large', 4 elected from 4 wards
    - (6) 8 councillors elected 'at large'
- 



## Council discussion

- Option 2
    - 8 councillors, 4 wards
    - Need to reflect Mangawhai community
    - Kaiwaka/Mangawhai links to Wellsford
    - Maungatoroto/Matakohe links to Whangarei
    - Ruawai north links to Dargaville
    - Community boards unlikely
    - Ward based
- 



## Informal consultation

- Survey on Council's website (Survey Monkey)
    - available 30 April to 18 May
    - questions asked:
      - Is this your main residence?
        - within Kaipara District or outside Kaipara District
      - Which ward do you currently associate most closely with?
        - Otamatea, Dargaville, West Coast/Central
      - Are you satisfied with the names of the current wards?
        - very satisfied to very dissatisfied
- 



## Informal consultation

- How many councillors do you think is a good number?
  - 6, 7, 8, 9, 10, 11
- How do you think we should elect our councillors?
  - wards, 'at large', mixture
- Should new community boards be established?
  - strongly agree to strongly disagree
- Are there any communities of interest that council should be considering?
- Do you have any other comments to help inform Council's proposal?



## Informal consultation

- Results
  - 78 responses
    - 35 (45%) from Otamatea
    - 24 (31%) from Dargaville
    - 19 (24%) from West Coast/Central
  - 51 (65%) want wards, 11 (14%) want 'at large', 15 (19%) want mix
  - 34 (44%) happy with current names, 19 (21%) unhappy with ward names



## Informal consultation

- 43 (55%) want 8 councillors, 17 (22%) want 9 councillors
  - 41 (53%) want community boards, 29 (37%) do not want community boards
  - Summary of informal consultation
    - retain wards
    - 8-9 councillors
    - retain ward names
    - consider community boards
- 



## Options investigated

- difficult to comply with communities of interest and +/- 10% rule
- (1) 9 councillors, 3 current wards
  - (2) 9 councillors, 4 wards
  - (3) 8 councillors, 4 wards
- 

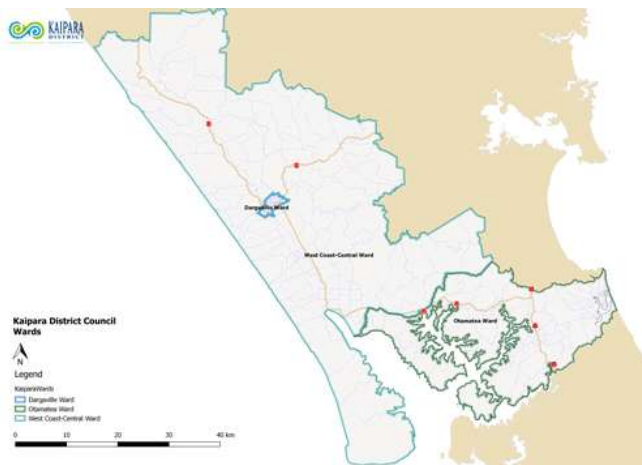


## Options investigated

- (1) 9 councillors, 3 wards
  - Dargaville (2)
  - Otamatea (4)
  - West Coast/Central (3)
- no community boards
- adds additional councillor to Otamatea
- no separate Mangawhai ward
- complies +/- 10% rule (allows future growth)



## Options investigated





## Background

Population Statistics (Estimated Resident Population 30 June 2017)

**Status quo: 22,530/9 members = 2,503 +/- 10% = 2,252 – 2,753**

Status quo wards comply with fair representation (+/- 10% rule)

Ward	Pop	Cnrs	Average	Fits Rule	% Variation
Dargaville	5,080	2	2,540	Yes	-9.8%
Otamatea	9,670	4	2,417	Yes	+1.48%
West Coast/Central	7,780	3	2,593	Yes	-7.92%



## Options investigated

- (2) 9 councillors, 4 wards
  - Dargaville (2)
  - Mangawhai/Kaiwaka (2)
  - Otamatea (2)
  - West Coast/Central (3)
- no community boards
- new Mangawhai/Kaiwaka ward
- Mangawhai population too large for 1 councillor



## Options investigated

- Does not allow for future growth of Mangawhai
- proposed Mangawhai/Kaiwaka Ward with Otamatea boundary is largely SH 1 to Kaiwaka inlet, includes Oneriri
- moves Otamatea Ward boundary back to pre-2012 boundary
- complies +/- 10% rule



## Background

Population Statistics (Estimated Resident Population 30 June 2017)

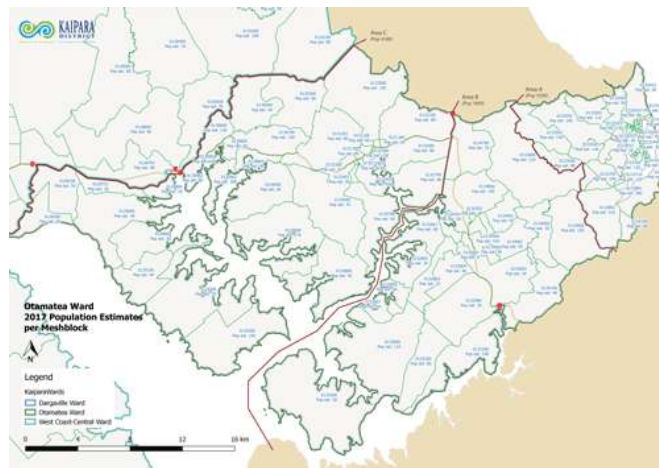
**22,530/9 members = 2,503 +/- 10% = 2,252 – 2,753**

Wards comply with fair representation (+/- 10% rule)

Ward	Pop	Cnrs	Average	Fits Rule	% Variation
Dargaville	5,080	2	2,540	Yes	+1.48%
Mangawhai/Kaiwaka	5,490	2	2,745	Yes	+9.67%
Otamatea	4,850	2	2,425	Yes	-3.11%
West Coast/Central	7,110	3	2,370	Yes	-5.31%



## Options investigated



## Options investigated

- (3) 8 councillors, 4 wards
  - Dargaville (2)
  - Mangawhai/Kaiwaka (2)
  - Otamatea (2)
  - West Coast/Central (2)
- no community boards
- new Mangawhai/Kaiwaka ward
- Mangawhai population too large for 1 councillor



## Options investigated

- proposed Mangawhai/Kaiwaka Ward with Otamatea boundary is largely SH 1 to Kaiwaka inlet, includes Oneriri
- moves Otamatea Ward boundary well into West Coast/Central Ward (allow for 1,600 population shift) – may not be acceptable?
- complies +/- 10% rule



## Options investigated



## Options investigated

Population Statistics (Estimated Resident Population 30 June 2017)

**22,530/8 members = 2,816 +/- 10% = 2,534 – 3,097**

Wards comply with fair representation (+/- 10% rule)

Ward	Pop	Cnrs	Average	Fits Rule	% Variation
Dargaville	5,080	2	2,540	Yes	-9.8%
Mangawhai/Kaiwaka	5,490	2	2,745	Yes	-2.52%
Otamatea	5,770	2	2,885	Yes	+2.45%
West Coast/Central	6,190	2	3,095	Yes	-9.90%



## Direction

- Components
  - number of councillors (8 or 9)
  - confirmation of wards
    - number
    - boundaries
    - number councillors per ward
    - Names
  - confirm no community boards
  - further investigation?



## Timetable

- April/May – informal consultation
  - 30 May Workshop 2
  - 26 June – initial proposal resolution
  - 4 July – initial proposal public notice
  - 4 July – 3 August – submission period
  - August – hearings
  - 29 August – final proposal resolution
- 



## Timetable

- 5 September – final proposal public notice
  - 5 September – 5 October – appeal/objection period
  - 17 October – basis of election public notice  
OR
  - end October – forward material to LGC
  - by 10 April 2019 – LGC determination
- 



# **Kaipara District Council**

## **Representation Review 2018**

Workshop 2, 30 May 2018

Dale Ofsoke, Electoral Officer

