

## Part Two – Activities Report

a) Dashboard - Organisational Monitoring

- 1 Help Desk
- 2 Staffing
- 3 Library Statistics
- 4 Development Activities

b) Assets Contract Acceptances

**1 Contract 688: Dargaville Water Main Renewals – Gordon Street**

United Civil Construction Limited \$209,114.83 (excl GST)

Lowest price conforming of two tenders. Within approved budget and in terms of Council's Business Plan.



## Organisational Monitoring – April 2011

### Staff Turnover

Actual YTD  
6%

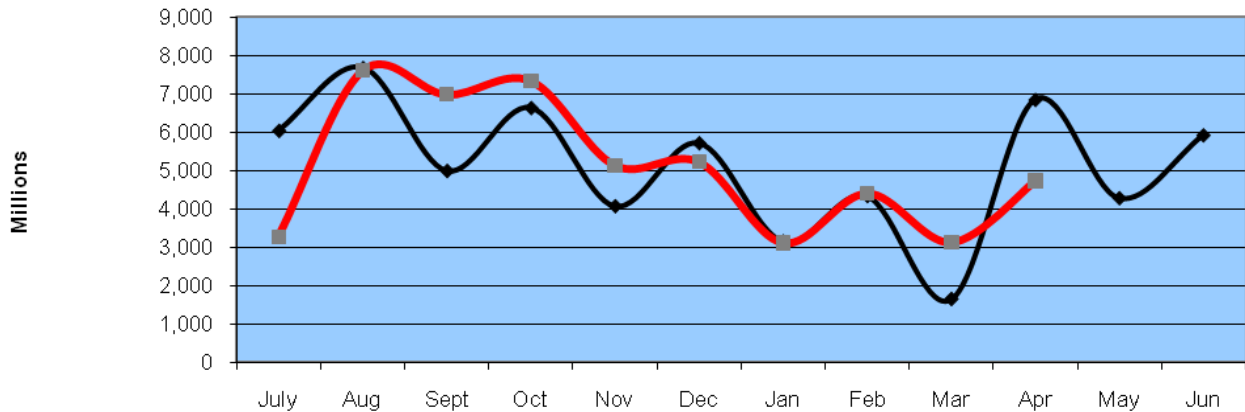
Target pa  
Less Than 15%

### Rates Collected (including penalties)

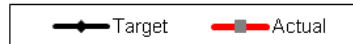
Actual YTD  
95%

Target  
100%

Cashflow as at 30 April 2011

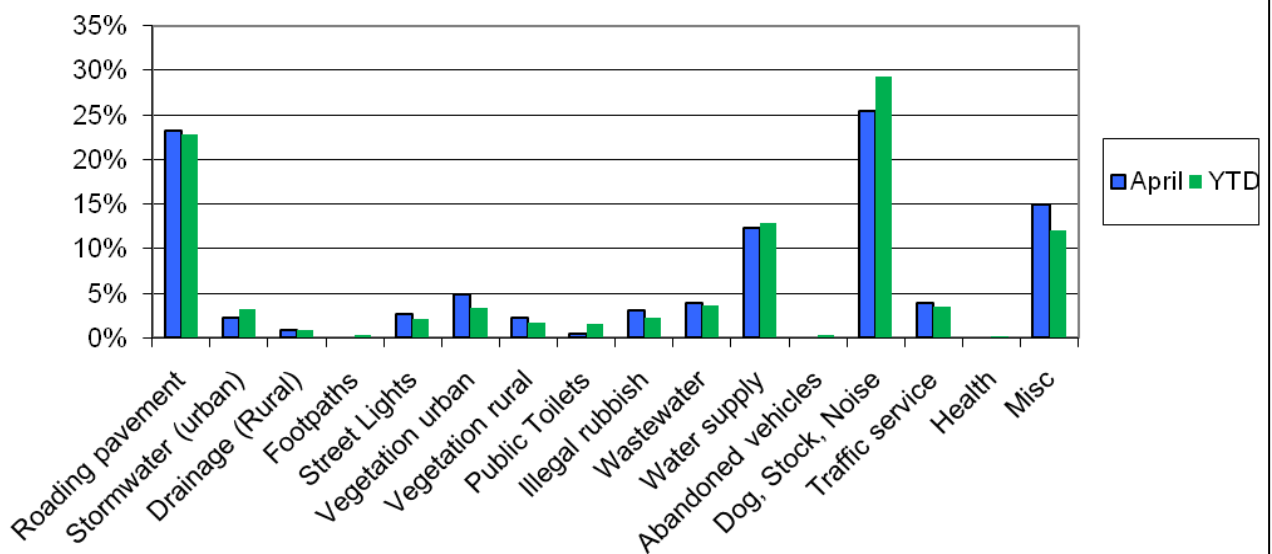


**Comment:** The target figures anticipated loan-raising during April, when, in fact, it is to occur in May. This re-timing explains the unfavorable April variance.



## Helpdesk

### Inquiries Received

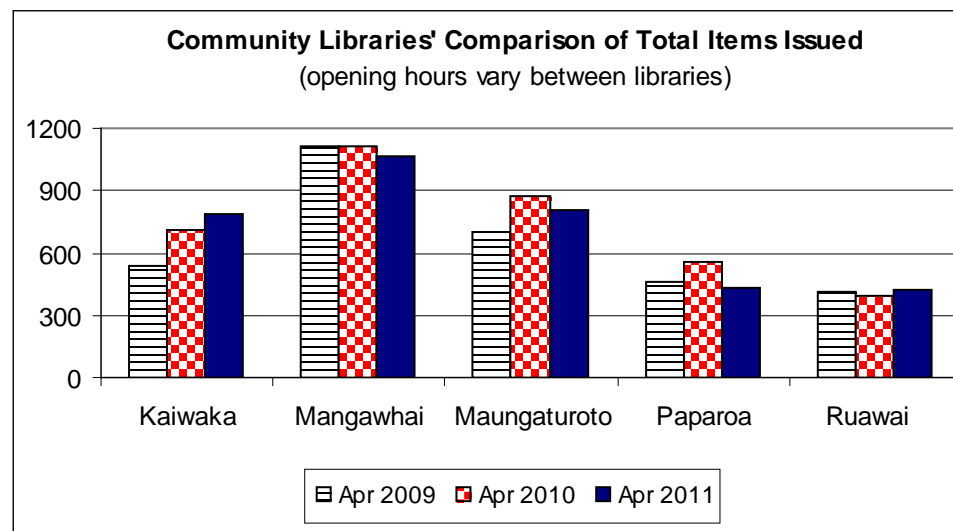
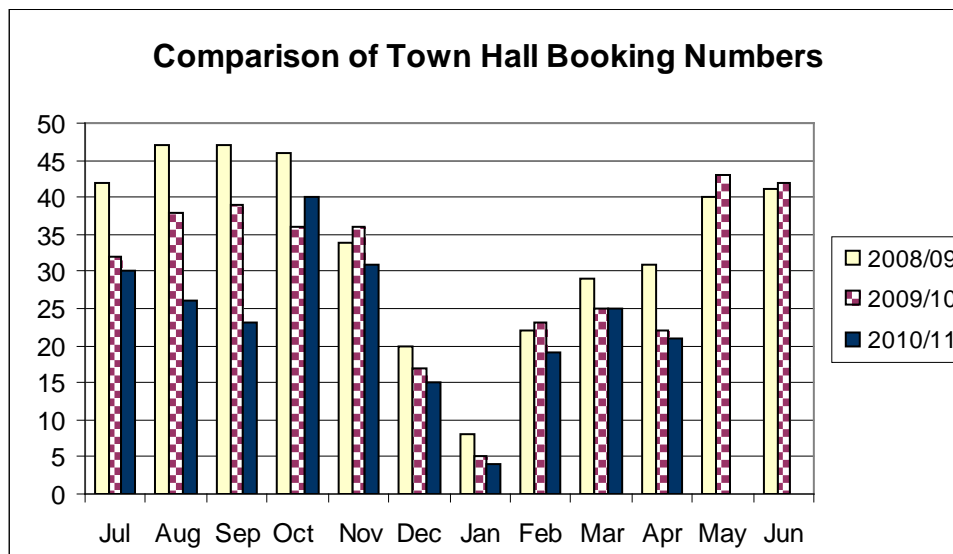
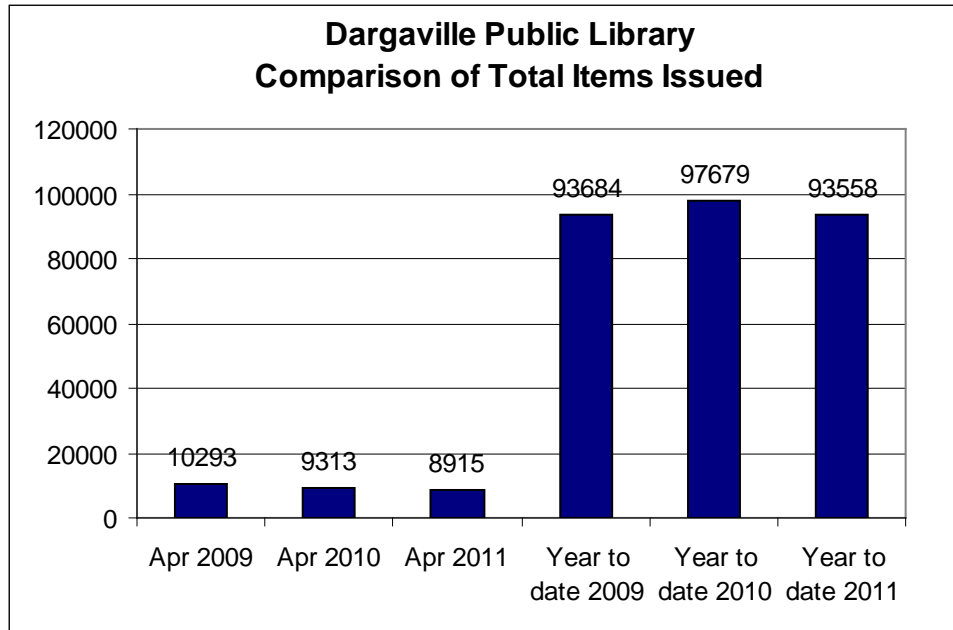


Number of Helpdesk Inquiries:

YTD: 2,653

April: 228

# Dargaville Public Library Monthly Report - April 2011



## Dargaville Public Library Monthly Report

April was busy with school holidays, with plenty of children and teens coming into the library over the period to use the computers, take out books, or just hang out. The library was full of people!

Library staff relocated the library's junior section just before the start of the holidays. It has been moved to a more sunny spot in the library, which gives children and their parents more room – and is a lot more user friendly. We have had lots of positive feedback from this move, and staff are very happy with it too.

The teen area has also been moved and is working a lot better in its new location.

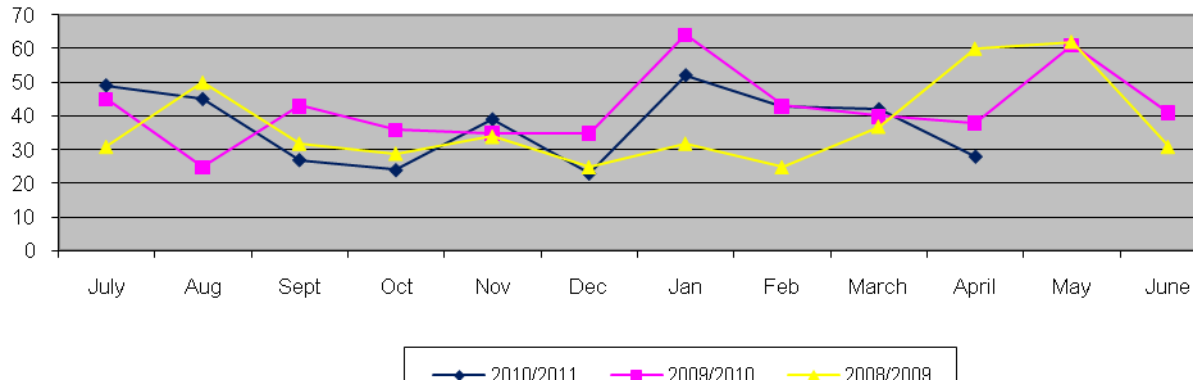
The Northland Librarian's Network swap took place in Whangarei in late April. The Network has done a great job in securing more funding from ASB Community Trust and the NZ Lottery Grants Board, which will be spent on increasing the collection.

Dargaville Library borrowed over 120 Large Print books and over 50 Talking Books at the exchange, and several of Kaipara's Community Libraries also who took part. (Paparoa, Maungaturoto and Kaiwaka Library borrow from the Network's collection, Mangawhai Library is no longer a member). Ruawai Library does not use the collection, although their librarian Lisa Salter has helped Dargaville out by taking part in the exchange on Dargaville's behalf in the past!

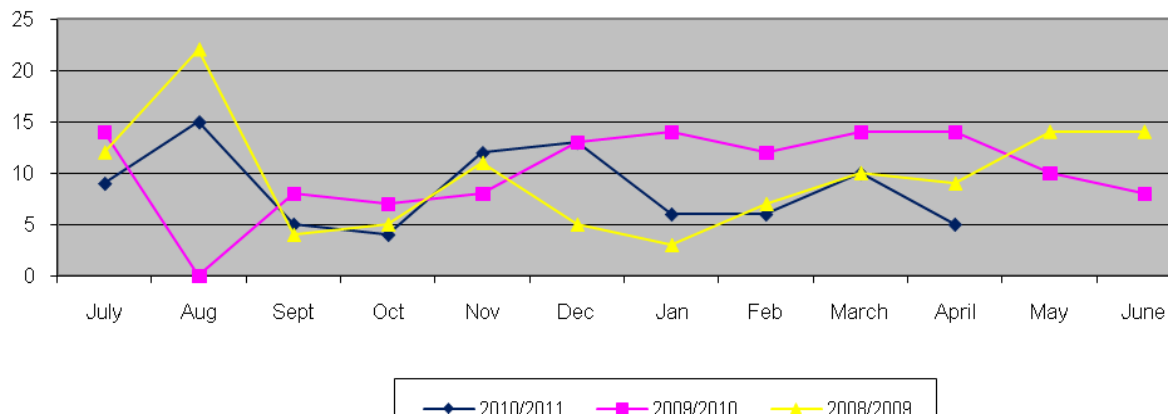
# District Management Helpdesk Inquiries

April 2011

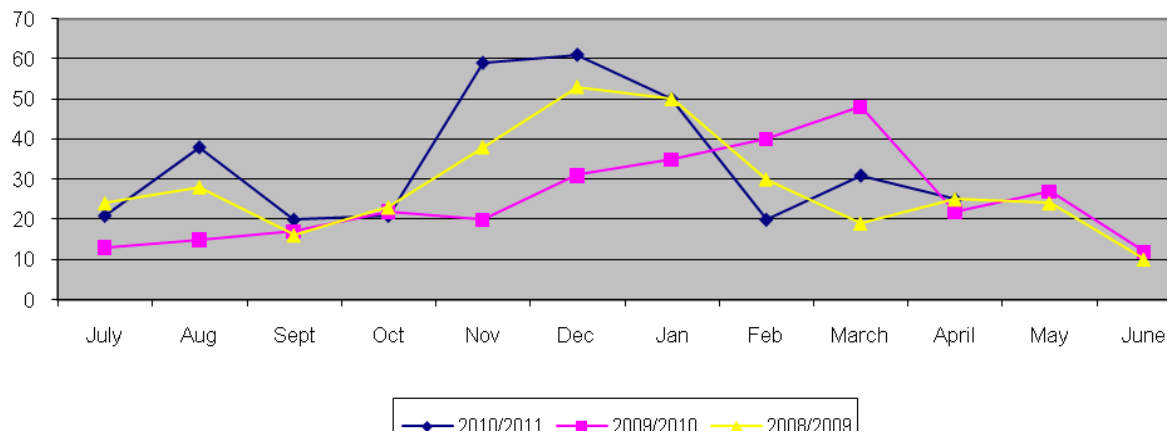
## Dog Complaints



## Stock Complaints

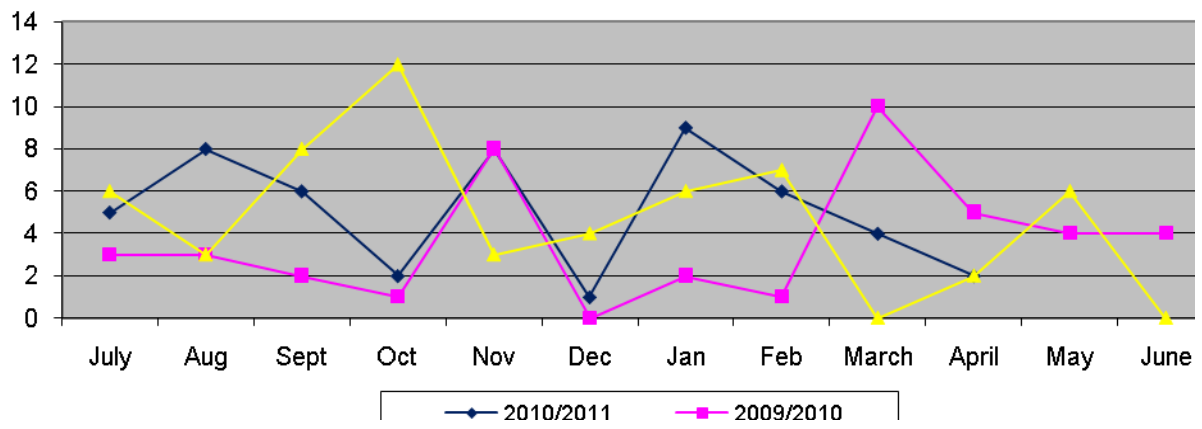


## Noise Complaints

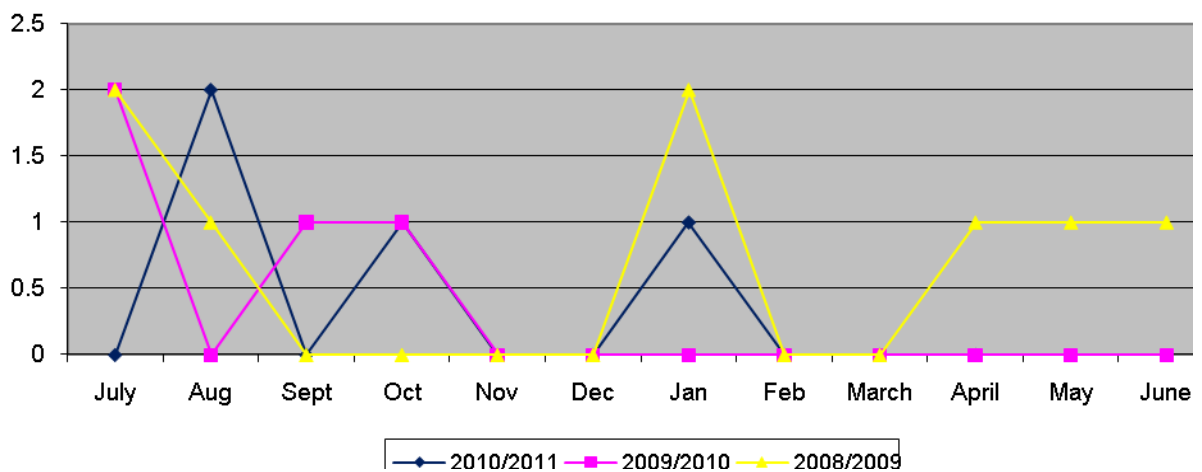


## District Management Helpdesk Inquiries continued

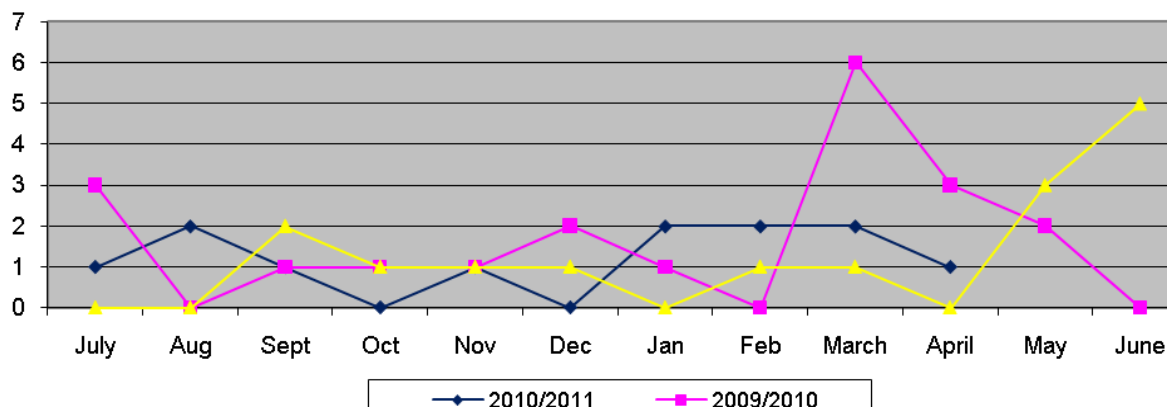
### Bylaws Inquiries



### Resource Management Inquiries



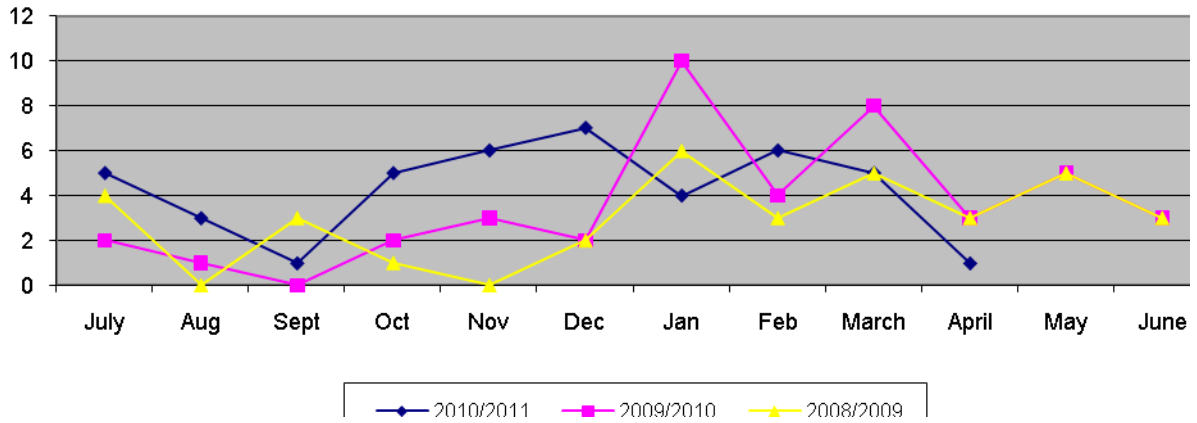
### Building Complaints



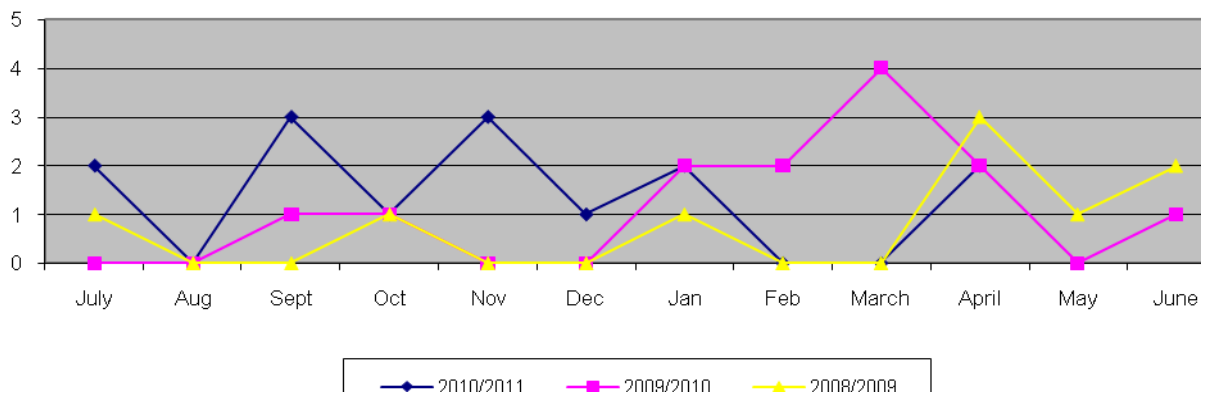
# Community Spaces Helpdesk Inquiries

April 2011

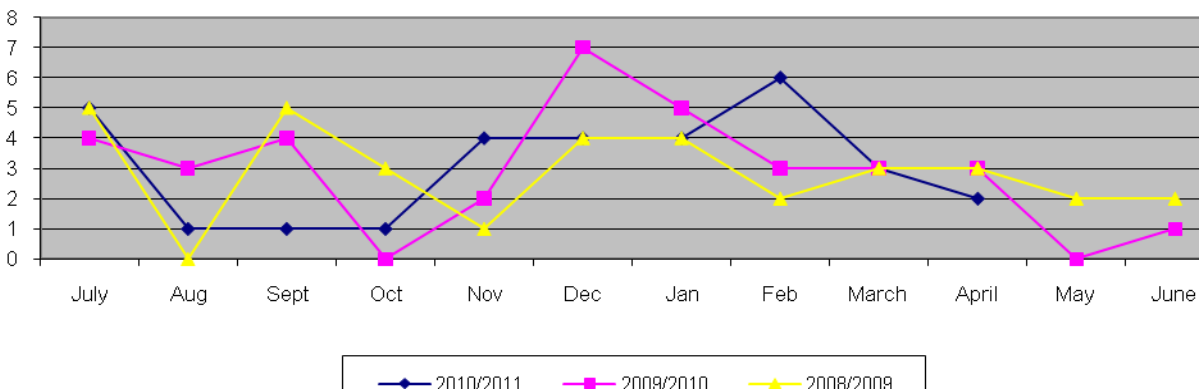
## Public Toilets



## Vandalism



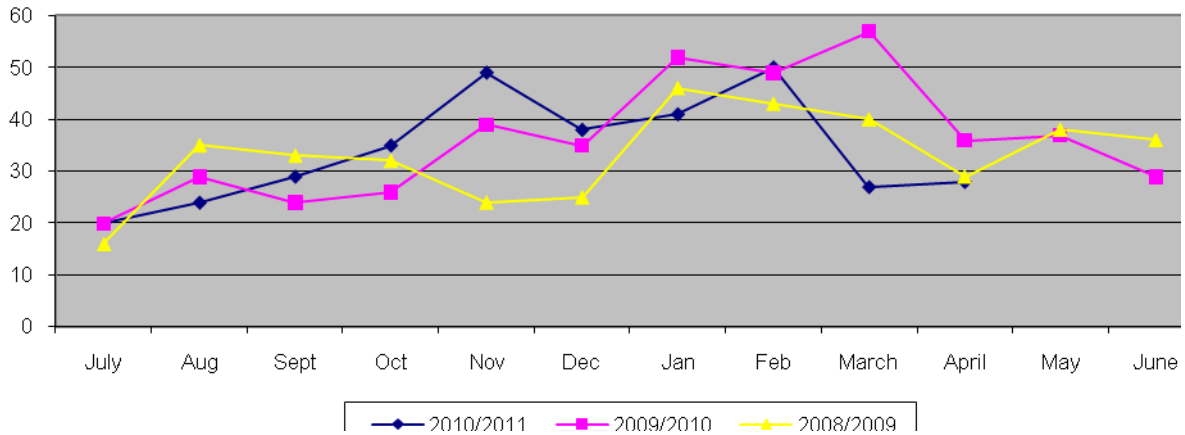
## Parks and Reserves



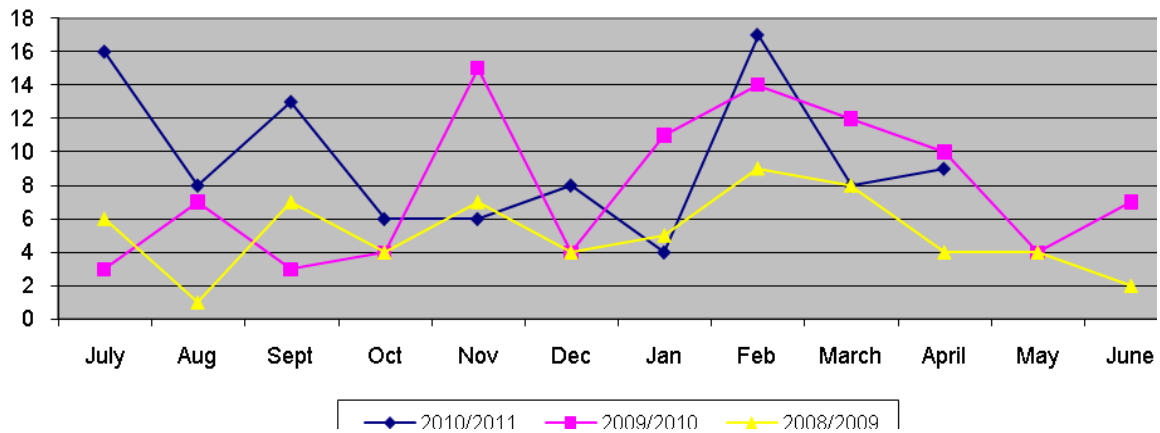
# Community Infrastructure Assets Helpdesk Inquiries

April 2011

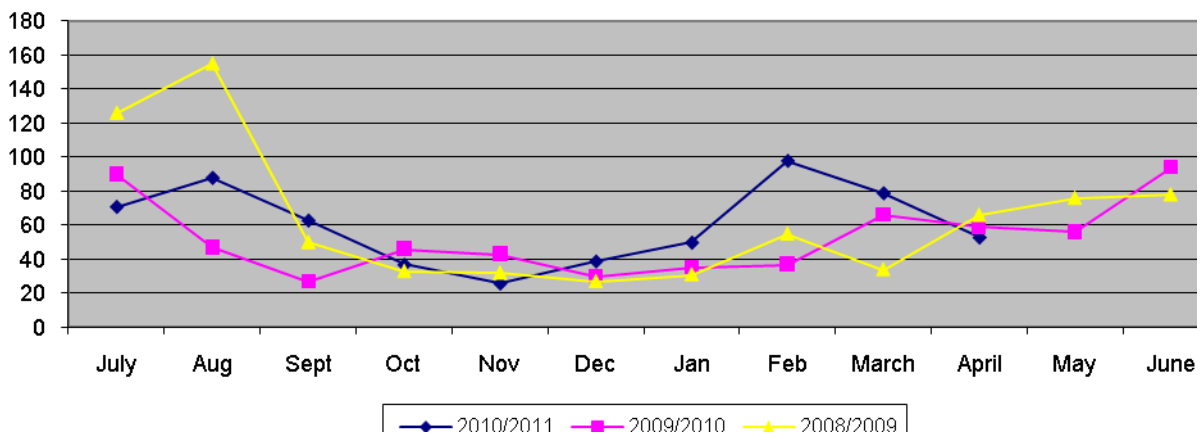
## Water Supply



## Wastewater

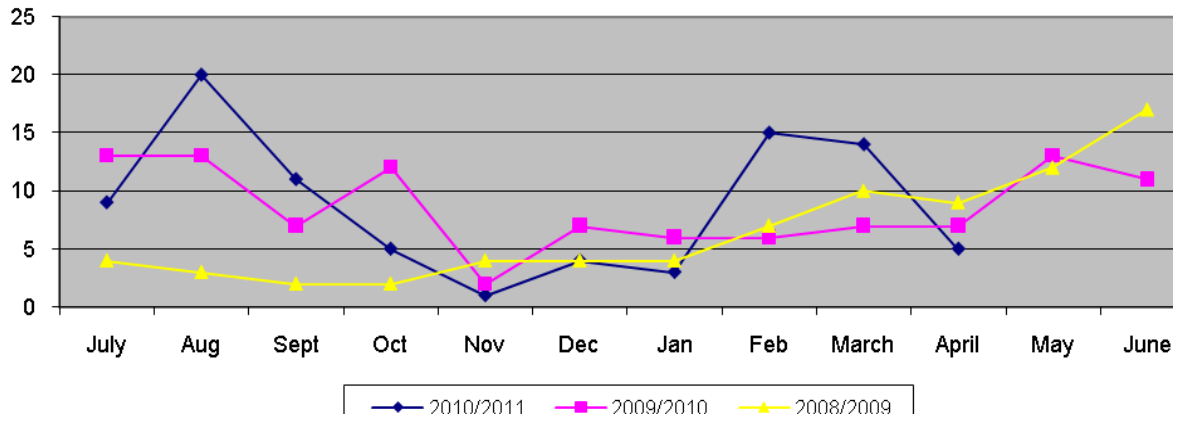


## Roading Pavement

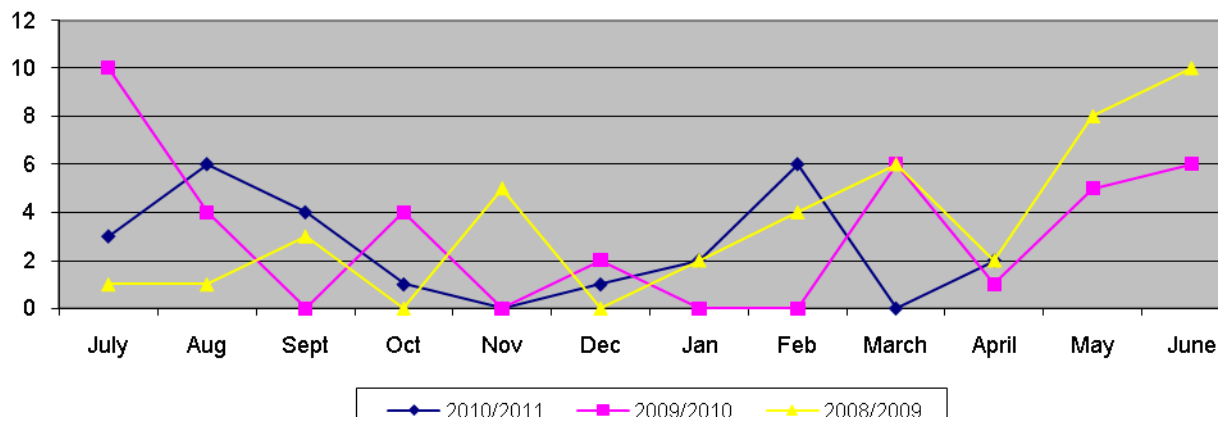


## Community Infrastructure Assets Helpdesk Inquiries continued

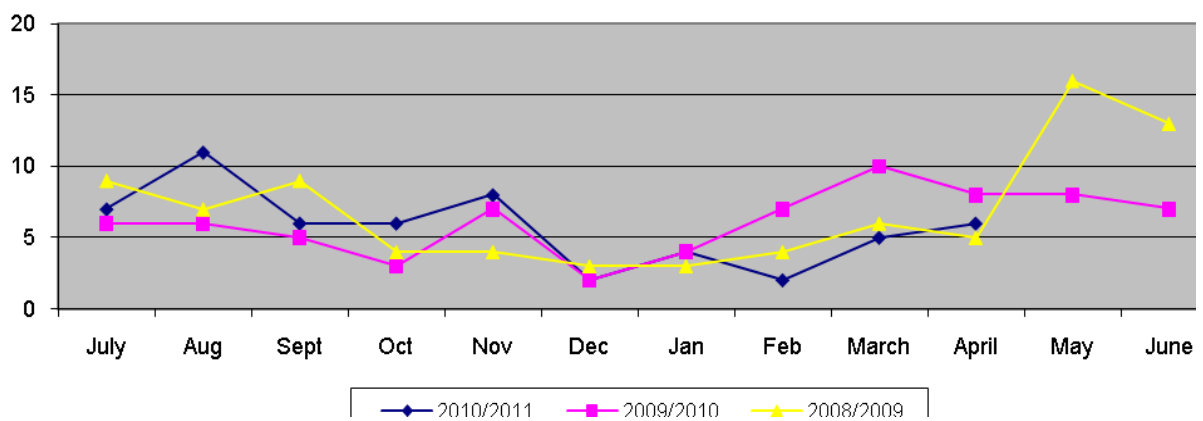
### Stormwater Urban



### Stormwater Rural

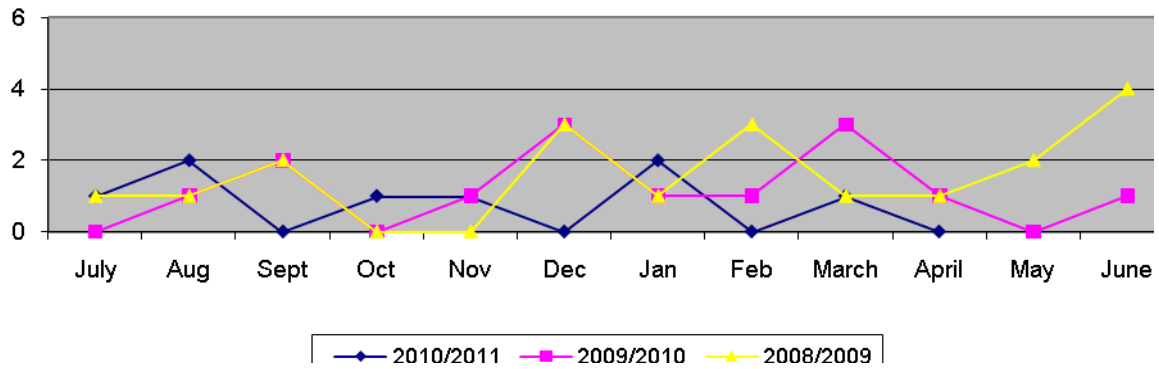


### Streetlights

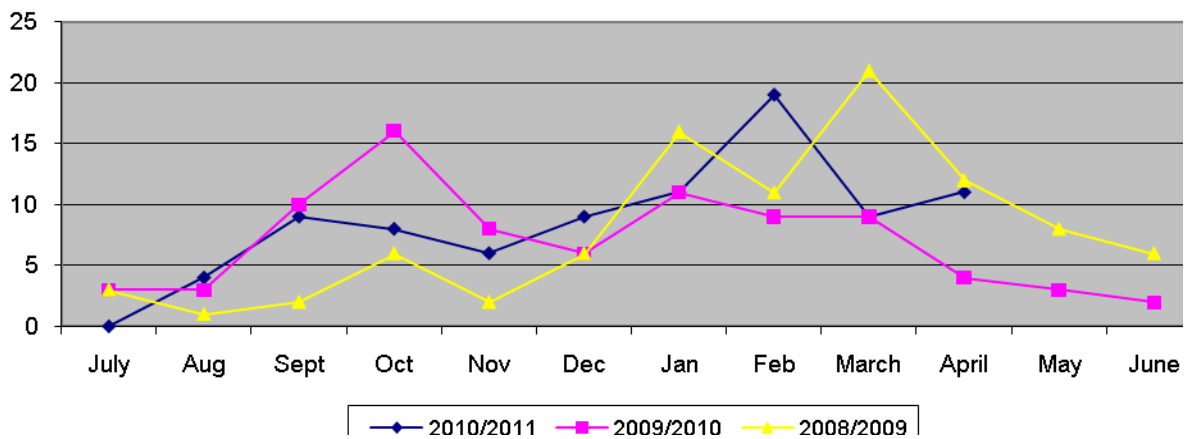


## Community Infrastructure Assets Helpdesk Inquiries continued

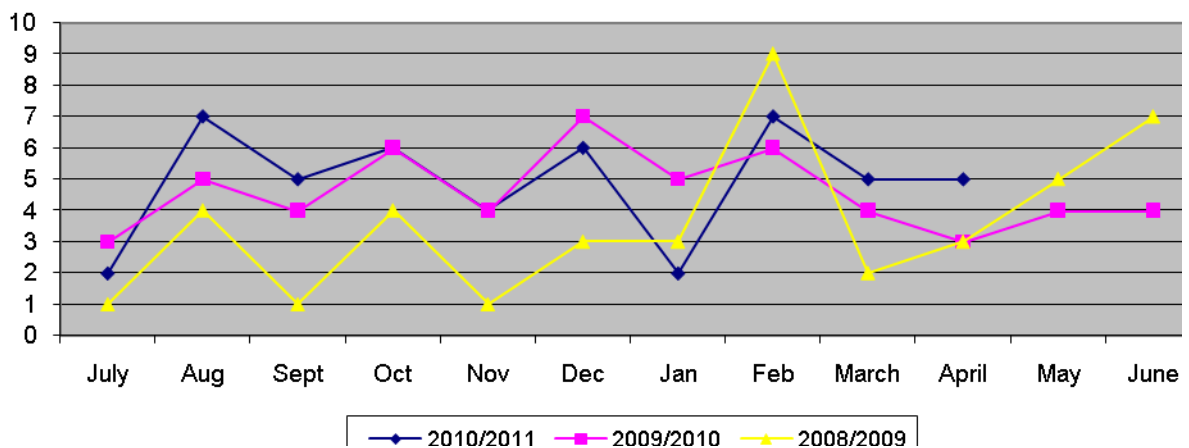
### Footpaths



### Vegetation Urban

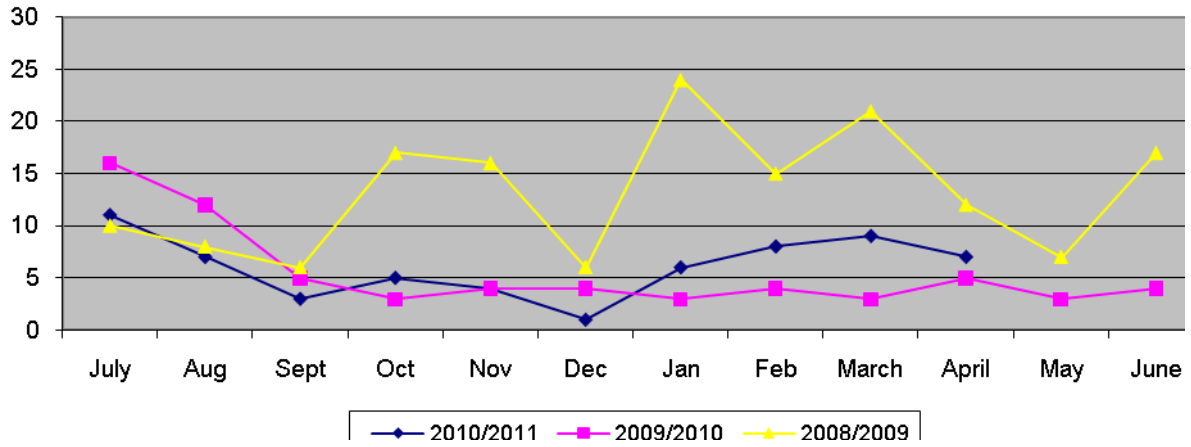


### Vegetation Rural

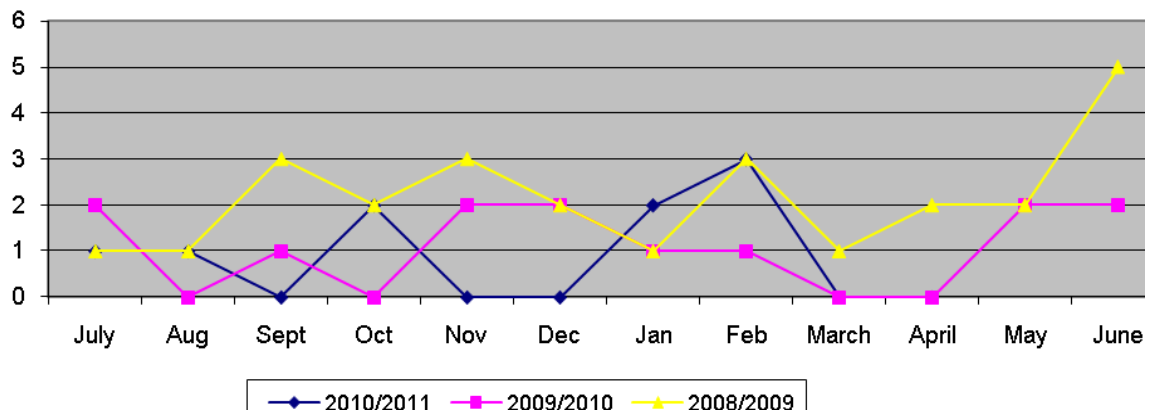


## Community Infrastructure Assets Helpdesk Inquiries continued

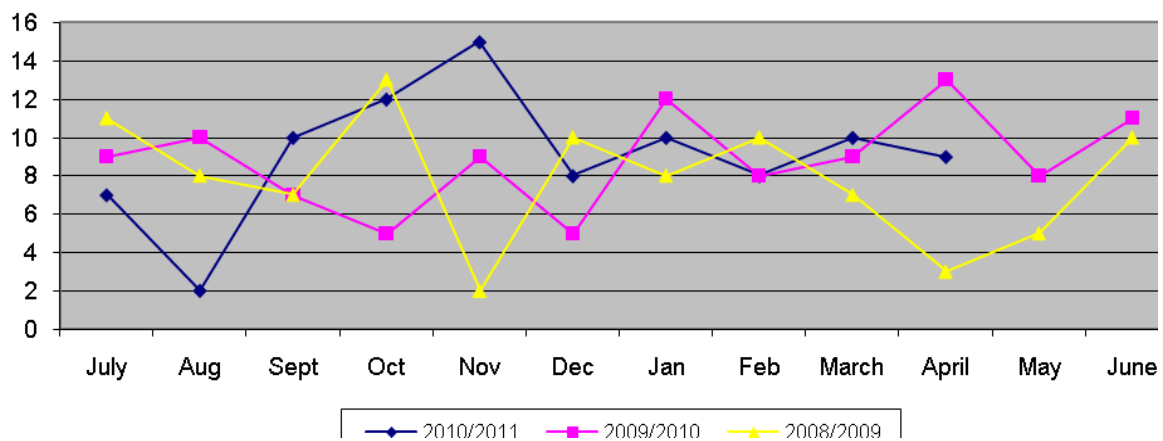
### Illegal Rubbish



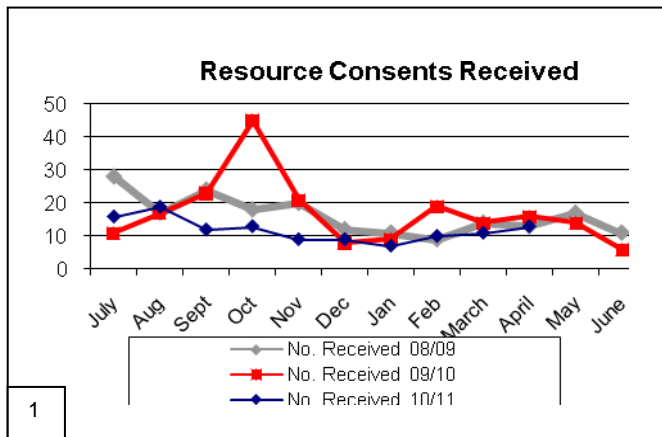
### Abandoned Vehicles



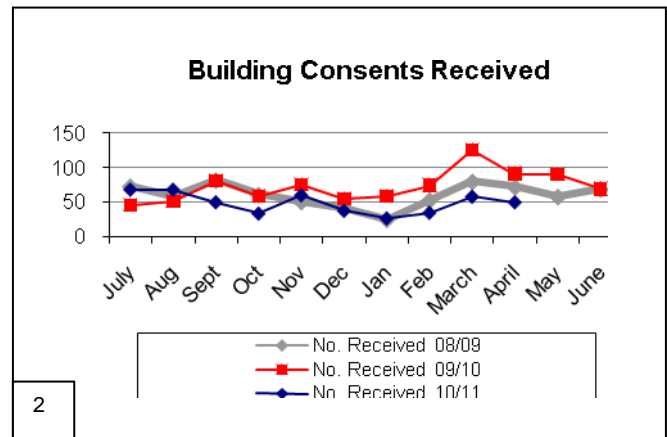
### Traffic Service



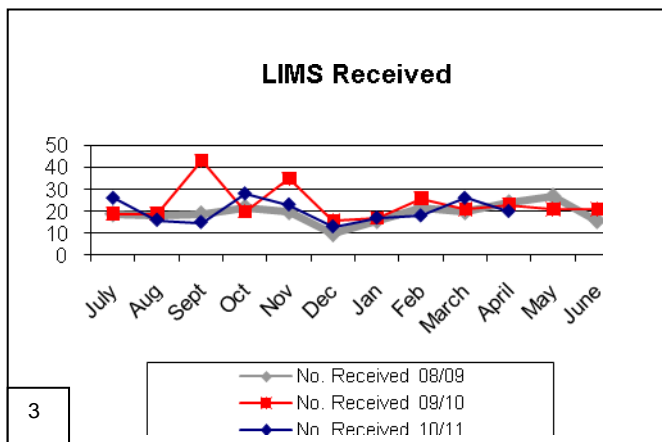
## Development Activities – April 2011



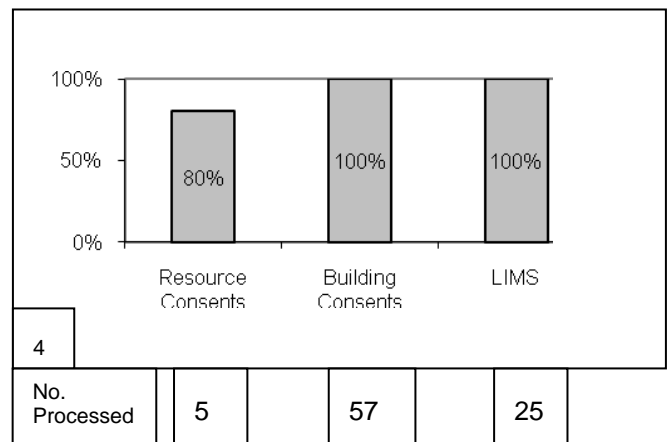
1



2



3



4

No. Processed

5

57

25

### Commentary

The resource consents received graph shows a continuation of the gradual increase from the record low point of January 2011 (graph 1), and building consents (graph 2) also continue above the low of the beginning of the year. The overall trend for Land Information Memorandum's received (graph 3) is also a slight rise from the December low.

It is interesting to compare the year-to-date figures for the current year with the year-to-date figures for several years ago. The numbers for the 2006/07 and 2007/08 years were fairly consistent and these are used as a base to compare the current numbers. The 98 resource consent applications received up to the end of April 2011 represent a drop to 43% of the previous level of activity, the 518 building consent applications received in the same period corresponds to a drop to 72%, while the number of Land Information Memorandum's received has dropped to 59% of the previous number.

The drop in resource consent applications is even more pronounced when it is remembered that the scale of current applications is generally noticeably smaller than in the past. On the other hand the level of building activity has held on remarkably well given the state of the economy, although it is still a low number. Overall it must be concluded that the extent of recovery is fragile at best.

There was one resource consent processed outside statutory timeframes, and this spoilt an otherwise perfect record shown in graph 4.

## Completion of Subdivision - April 2011

These tables show the time between application lodged and final clearance (224c).

### 1/07/10 - 30/06/11

Application received in the year:

Month	2004	2005	2006	2007	2008	2009	2010	How many 224 issued
July		2			1	4	1	8
August		1	1	2		3		7
September		1		1	1	3	2	8
October				3	2		4	9
November				4			6	10
December			1			2	2	5
January			2		5	2	1	10
February	1		1	1	1	2		9
March						1	1	2
April			1	1			1	3
May								
June								
	<b>1</b>	<b>4</b>	<b>6</b>	<b>12</b>	<b>10</b>	<b>17</b>	<b>21</b>	<b>71</b>

### 1/07/09 - 30/06/10

Application received in the year:

Month	2004	2005	2006	2007	2008	2009	2010	How many 224 issued
	<b>2</b>	<b>6</b>	<b>9</b>	<b>23</b>	<b>19</b>	<b>26</b>	<b>2</b>	<b>87</b>

### 1/07/08 - 30/06/09

Application received in the year:

Month	2004	2005	2006	2007	2008	2009	how many 224 issued
	<b>2</b>	<b>9</b>	<b>21</b>	<b>38</b>	<b>37</b>	<b>1</b>	<b>108</b>

These tables show for any given month when the conditions certificates (224c) were issued, the years in which the relevant applications were lodged, for example, in July 2010 eight 224c certificates were issued. Of these, two of the applications were lodged in 2005, one in 2008, four in 2009 and one in 2010.

## Additional Lots Created By Subdivision - April 2011

### 1/07/2010 - 31/06/11

<b>224 issued</b>	<b>Month</b>	<b>EcoCare Area</b>	<b>Otamatea Area</b>	<b>The rest</b>	<b>Total</b>
8	July		4		4
7	August		12	2	14
8	September		6	1	7
9	October			3	3
10	November	1	1	6	8
5	December	2	3		5
10	January		8	3	11
9	February		11		11
2	March	2			2
	April		1	1	2
	May				0
	June				0
<b>66</b>		<b>5</b>	<b>46</b>	<b>16</b>	<b>67</b>

### 1/07/2008 - 30/06/09

<b>224 issued</b>	<b>Month</b>	<b>EcoCare Area</b>	<b>Otamatea Area</b>	<b>The rest</b>	<b>Total</b>
<b>108</b>		<b>3</b>	<b>56</b>	<b>95</b>	<b>154</b>

### 1/07/2009 - 31/06/10

<b>224 issued</b>	<b>Month</b>	<b>EcoCare Area</b>	<b>Otamatea Area</b>	<b>The rest</b>	<b>Total</b>
<b>87</b>		<b>96</b>	<b>113</b>	<b>21</b>	<b>230</b>

The amounts on the right hand side of the tables are additional lots only.

Some 224c certificates produce no additional lots because they are just boundary adjustments.

Some 224c certificates create lots around existing houses, so while the result will be a new unit for rating purposes, they will not be additional units in terms of the Development Contributions Policy.

Development Contributions do not apply to those lots in the Mangawhai and Otamatea Areas where the consent was granted before the policy came into effect. Where a subdivision is liable for development contributions, these are always paid before the 224c is issued.

Indication of Economic Growth - Consents Issued - April 2011

District Plan Zone	Land Use		Variations		Subdivision/ Variation							Building Consents				COC	
	Total no. issued YTD	Total no. issued Month	No. issued YTD	No. issued Month	No. issued YTD	No. issued Month	Total Lots YTD	Total Lots Month	Large Lots	Small Lots	Add. Lots created	No. issued YTD	No. issued Month	New dwellings/ relocates Month	Total value Month \$	No. issued YTD	No. issued Month
Baylys Beach Residential												5	2		27,900		
Coastal					1							7					
Dargaville Residential												36	7		96,229		
Glinks Gully Residential												2					
Kai Iwi Lakes Visual Catchment												2	1		16,000		
Kaipara Harbour Environ Area					2							24	2	1	375,597		
Kellys Bay Residential												1					
Limited Industrial	1				1												
Mangawhai Catchment Rural					8							52	5	3	388,800		
Mangawhai Commercial					1												
Mangawhai Industrial																	
Mangawhai Residential	4				3							128	11	4	979,176		
Mangawhai Rural-Residential												18	3	2	476,000	2	
Maori Purposes												7	2		7,000		
Maunganui Bluff Residential																	
Omamari Residential																	
Other Commercial												5				1	
Other Industrial												8	1		1,800		
Other Residential	12	2			13							14	2		16,060		
Other Rural	12	2	2		36	1						149	21	3	327,040		
Pahi Residential												2					
Pouto Point Residential																	
Tinopai Residential												1					
Whakapirau Residential												2					

